

Monthly Statistics of Building Materials and Components

March 2010

No. 421

NOTES

In tables where figures have been rounded to the nearest final digit, there may be an apparent slight discrepancy between the sum of the constituent items and the total as shown.

Symbols. The following symbols have been used throughout.

.. = not available

(P) = provisional

- = nil or negligible

(R) = revised

All figures are subject to revision.

A National Statistics publication

National Statistics are produced to high professional standards set out in the National Statistics Code of Practice. They undergo regular quality assurance reviews to ensure they meet customer needs.

Unless otherwise stated, the statistics published in this volume have been collected by the Office for National Statistics on behalf of the Department for Business, Innovation & Skills.

Further information about the contents of this publication can be obtained from Construction Market Intelligence, 1 Victoria Street,
London, SW1H 0ET;
Telephone : 020 - 7215 - 1555 Fax : 020 - 7215 - 1304
E-mail : materialstats@bis.gsi.gov.uk.

URN 10/313c

7 April 2010

ii

CONTENTS

	<u>Page</u>
Table 1 : Construction Material Price Indices	1
Table 2 : Price Indices of Construction Materials – monthly	2 & 3
Table 3 : Price Indices of Construction Materials – annual averages	4
Table 4 : Sales of Sand and Gravel in Great Britain	5
Table 5 : Sales of Sand and Gravel by English Regions, Wales and Scotland	6 & 7
Table 6 : Sales of Sand and Gravel by English and Welsh Counties and Scottish Regions	8 & 9
Table 7 : Slate : Production, Deliveries and Stocks	10
Chart 1 : Deliveries of Sand & Gravel and Ready-Mixed Concrete	11
Table 8 : Cement and Clinker : Production, Deliveries and Stocks	12
Chart 2 : Deliveries of Bricks, Concrete Building Blocks and Cement	13
Table 9 : Bricks : Production, Deliveries and Stocks for Great Britain	14 & 15
Table 10 : Bricks : Production, Deliveries and Stocks by English Regions, Wales and Scotland	16 to 19
Table 11 : Concrete Building Blocks : Production, Deliveries and Stocks for Great Britain	20 & 21
Table 12 : Concrete Building Blocks : Production, Deliveries and Stocks by English Regions, Wales and Scotland	22 & 23
Table 13 : Concrete Roofing Tiles; Fibre Cement Products; Ready-Mixed Concrete	24
Chart 3 : Comparison of Imports and Exports	25
Table 14 : Value of Overseas Trade in Selected Materials and Components for Constructional Use : Imports (cif) and Exports (fob)	26 to 35

Table 1: Construction Material Price Indices

United Kingdom	2005 = 100					
	2005	2006	2007	2008	2009	2010
(a) New Housing						
January	97.5	101.6	109.8	115.3	119.7	122.2 (P)
February	98.8	102.6	111.7	116.8	120.6	123.4 (P)
March	99.3	103.4	112.4	117.5	120.6	
April	99.8	103.6	112.3	118.2	120.2	
May	100.4	104.6	113.7	119.0	119.8	
June	100.4	105.8	114.4	118.7	119.5	
July	100.7	106.5	115.2	120.0	119.1	
August	100.7	107.6	116.3	120.5	120.2	
September	100.3	107.7	116.3	120.4	121.0	
October	100.3	108.8	116.4	121.1	121.7	
November	100.6	109.5	116.0	120.4	122.6	
December	101.2	110.0	115.8	119.7	122.5 (P)	
Annual Average	100.0	106.0	114.2	119.0	120.6 (P)	
(b) Other New Work						
January	98.9	100.5	110.1	114.3	122.9	123.6 (P)
February	100.7	101.7	111.7	116.2	122.1	125.9 (P)
March	100.8	102.7	112.1	117.3	121.6	
April	101.1	103.1	112.0	119.2	120.7	
May	100.7	104.4	112.9	121.6	120.7	
June	100.4	105.6	113.3	123.7	120.7	
July	100.2	106.8	113.9	126.4	120.7	
August	99.7	108.3	114.8	127.7	120.9	
September	99.2	108.7	114.4	128.6	121.8	
October	99.1	109.5	114.5	129.3	123.5	
November	99.4	109.6	114.0	126.6	125.3	
December	99.8	109.9	113.6	124.7	123.5 (P)	
Annual Average	100.0	105.9	113.1	123.0	122.0 (P)	
(c) Repair and Maintenance						
January	98.1	101.6	111.0	116.0	122.1	124.6 (P)
February	99.3	102.4	112.9	117.2	122.0	126.1 (P)
March	99.8	103.5	113.5	117.9	121.6	
April	100.0	103.9	113.3	119.2	121.2	
May	100.4	104.8	114.4	120.4	121.0	
June	100.2	106.1	115.3	121.2	120.7	
July	100.3	106.9	116.0	122.9	120.6	
August	100.3	108.5	116.9	123.7	121.7	
September	99.9	109.0	117.2	123.8	122.8	
October	100.1	110.2	117.2	124.7	123.9	
November	100.5	110.8	116.6	123.5	125.2	
December	101.1	111.4	116.4	122.4	124.8 (P)	
Annual Average	100.0	106.6	115.1	121.1	122.3 (P)	
(d) All Work						
January	98.5	101.2	110.6	115.3	122.5	123.8 (P)
February	99.7	102.1	112.3	116.9	122.0	125.8 (P)
March	100.1	103.1	112.8	117.9	121.6	
April	100.3	103.5	112.6	119.2	121.0	
May	100.5	104.7	113.8	121.0	120.9	
June	100.3	105.8	114.3	122.3	120.7	
July	100.3	106.9	114.7	124.4	120.6	
August	100.2	108.4	115.8	125.7	121.1	
September	99.7	108.7	116.0	126.2	122.1	
October	99.7	109.8	116.0	126.9	123.4	
November	100.2	110.2	115.5	125.0	124.9	
December	100.6	110.6	115.2	123.5	123.9 (P)	
Annual Average	100.0	106.3	114.1	122.0	122.1 (P)	

Note: These indices are weighted averages of Producer Price Indices. They do not include electrical or mechanical engineering materials.

Source ONS/BIS

PRICES

Table 2: Price Indices of Construction Materials

United Kingdom

	2009						
	Feb	Mar	Apr	May	June	July	Aug
AGGREGATES							
Coated roadstone - including levy	133.1	135.8	136.4	137.0	140.1	143.7	135.5
- excluding levy	132.6	135.5	135.9	136.5	139.7	143.4	135.1
Crushed rock - including levy	105.2	109.7	107.7	108.4	113.2	121.6	122.4
- excluding levy	99.4	105.0	101.6	102.5	109.2	120.8	124.9
Sand & gravel - including levy	116.8	116.7	115.5	114.2	111.4	108.3	108.4
- excluding levy	113.4	113.2	111.3	109.7	106.5	102.9	103.1
CEMENT AND CONCRETE							
Cement	143.3	142.4	141.3	141.1	139.2	138.7	137.2
Ready-mixed concrete	115.0	114.5	113.6	113.9	111.2	109.2	109.3
Plasterboard etc
Pre-cast concrete products	118.9	118.8	118.8	118.8	..	118.4	118.4
of which : Blocks, bricks, tiles & flagstones	121.7	121.5	121.7	121.6	120.9	121.1	121.0
Concrete reinforcing bars	138.4	130.0	122.1	125.0	123.8	122.8	120.3
CLAY PRODUCTS							
All Bricks	119.7	118.6	117.5	116.1	116.2	116.1	117.6
Ceramic tiles	82.8	83.4	83.5	83.5	83.4	83.1	82.9
Ceramic sanitaryware	130.9	130.9	130.9	129.7	129.7	130.9	130.9
TIMBER AND JOINERY							
Imported softwood *	114.3	114.5	115.9	116.0	117.5	131.1	135.3
Imported plywoods *	138.0	127.6	121.0	119.1	111.9	106.5	111.1
Sawn wood	116.2	117.5	115.9	117.5	117.8	119.3	119.9
Particle Board	111.7	110.9	111.1	111.5	111.1	111.3	110.9
Builders woodwork	119.1	119.7	119.7	119.3	119.1	118.9	119.1
of which : Doors & windows	125.5	127.1	127.3	127.1	127.2	126.3	126.2
METAL PRODUCTS							
Fabricated structural steel	120.4	114.0	107.9	104.6	101.7	99.4	98.6
Doors & windows**	90.3	90.2	90.2	90.2	90.2	89.3	89.1
Screws etc*	110.5	110.6	110.6	110.6
Other Builders Ironmongery *	109.8	109.8	109.8	109.5
Central heating boilers *	109.0	109.0	109.0	109.0	109.0	109.8	110.4
Central heating pumps *	120.8	120.8	125.3	125.3	125.3	125.3	125.3
Taps and Valves for sanitaryware *	152.5	148.4	148.4	148.4	153.6	153.6	153.6
Metal sanitaryware *	111.4	111.4	111.4	111.4
PLASTIC PRODUCTS							
Pipes and fittings (rigid)	122.7	122.5	122.3	121.6	121.6	121.3	121.3
Pipes and fittings (flexible)**	135.5	130.2	134.5	127.6	126.9	131.1	129.3
Sanitaryware	113.9	113.9	113.2	113.2	113.3	113.3	113.3
Doors & windows**	108.8	108.8	108.8	108.6	106.9	107.0	107.0
OTHER BUILDING MATERIALS							
Asphalt products *	147.5	147.3	147.7	147.2	147.1	146.5	154.6
Insulating materials (thermal or acoustic)	106.1	106.8	105.7	104.1	102.9	103.0	102.9
Paint (aqueous)	118.4	118.5	118.6	118.6	118.6	118.6	118.6
Paint (non-aqueous)**	112.6	112.8	113.1	113.0	113.0	113.0	113.2
Lighting equipment for buildings*	105.0	104.9	104.9	104.9	104.9	109.7	109.7
Lighting equipment for roads	112.2	112.6	112.6	114.0	113.7	113.8	113.8
Electric heating apparatus *	111.4	111.4	117.2	117.2	117.2	117.2	117.2
Electric water heaters *	123.8	134.6	134.7	135.2	134.6	134.6	134.1
Kitchen furniture	106.2	108.1	106.4	106.1	106.4	106.5	106.2

Notes : 1. These indices, which are compiled by the Office for National Statistics, are a selection of producer price indices.

The complete list is available online at www.statistics.gov.uk, by searching for the reference MM22.

*The Office for National Statistics state that these indices are based on relatively few quotes and in the long term should not be relied upon for contractual purposes.

* * These index values are considered less reliable mainly due to lack of market coverage.

2005=100

Sep	Oct	Nov	Dec	2010		
				Jan	Feb	
				(P)	(P)	
						AGGREGATES
138.0	148.2	153.3	153.8	154.9	154.9	Coated roadstone - including levy
137.8	148.6	152.9	153.4	153.8	153.8	- excluding levy
117.8	116.8	113.5 (P)	113.3 (P)	113.9	113.9	Crushed rock - including levy
114.8	113.5	109.8 (P)	109.5 (P)	109.6	109.5	- excluding levy
109.5	108.6	109.3 (P)	108.7 (P)	109.1	109.1	Sand & gravel - including levy
104.3	103.3	104.5 (P)	103.7 (P)	103.7	103.7	- excluding levy
						CEMENT AND CONCRETE
136.2	135.0	134.6	134.6	133.4	134.0	Cement
108.1	108.2	106.1 (R)	106.4	106.5	106.7	Ready-mixed concrete
..	Plasterboard etc
118.6	118.4	117.9	117.6	117.1	117.9	Pre-cast concrete products
121.1	120.8	120.6	120.3	120.8	122.0	of which : Blocks, bricks, tiles & flagstones
122.4	125.0	121.0	123.0 (P)	120.0	123.5	Concrete reinforcing bars
						CLAY PRODUCTS
116.7	116.9	117.2	116.2	114.4	117.8	All Bricks
83.2	81.9	81.5	80.9	86.3	86.3	Ceramic tiles *
130.9	130.9	130.9	130.9	133.6	130.3	Ceramic sanitaryware*
						TIMBER AND JOINERY
137.1	143.7	144.3	144.4	148.8	148.8	Imported softwood *
124.8	131.8	126.2	134.3	134.8	138.7	Imported plywood *
120.2	120.8	120.3	120.4	128.9	128.6	Sawn wood
111.2	111.3	111.6	111.7 (P)	111.3	112.2	Particle Board
120.2	120.1	120.6	121.2	121.6	122.5	Builders woodwork
128.7	128.8	128.3 (P)	128.3 (P)	128.5	128.4	of which : Doors & windows
						METAL PRODUCTS
100.0	101.5	100.6	100.2 (P)	99.6	99.5	Fabricated structural steel
89.1	89.1	89.1	90.3	90.3	90.4	Doors & windows**
..	Screws etc *
..	Other Builders Ironmongery*
110.5	110.5	111.3	111.4	111.4	111.4	Central heating boilers *
125.3	Central heating pumps*
153.6	153.6	153.6	153.6	156.2	155.8	Taps and Valves for sanitaryware *
..	Metal sanitaryware *
						PLASTIC PRODUCTS
120.4	120.4	120.8	120.8	120.8	120.8	Pipes and fittings (rigid)
128.8	128.8	128.3	128.3	128.3	128.2	Pipes and fittings (flexible)**
114.0	114.0	114.0	114.0	114.5	114.5	Sanitaryware
107.3	107.1	108.0 (P)	108.0 (P)	108.1	107.9	Doors & windows **
						OTHER BUILDING MATERIALS
156.3	157.1	157.7	159.6	159.2	154.8	Asphalt products *
103.2	103.1	102.7	102.5	102.4	101.9	Insulating materials (thermal or acoustic)
118.6	118.6	118.6	118.6	120.8	..	Paint (aqueous)
113.2	113.2	113.3	113.0	112.9	112.9	Paint (non-aqueous)**
109.7	109.7	109.7	109.7	109.7	109.7	Lighting equipment for buildings*
114.3	109.9	109.8	109.8	109.6	109.6	Lighting equipment for roads
117.2	Electric heating apparatus *
133.8	133.8	134.2	134.5	134.5	132.2	Electric water heaters*
105.5	107.3	107.1	106.8	107.4	107.4	Kitchen furniture

Source : ONS

PRICES

Table 3: Price Indices of Construction Materials - Annual Averages

United Kingdom	2005=100					
	2004	2005	2006	2007	2008	2009
AGGREGATES						
Coated roadstone - old						
- including levy	95.8	100.0	108.2	113.8	130.0	140.8
- excluding levy	94.9	99.9	107.5	113.7	129.7	140.4
Crushed rock - old						
- including levy	103.2	98.6	96.1	95.2	103.4	112.9 (P)
- excluding levy	105.7	98.4	94.5	93.6	100.6	109.2 (P)
Sand & gravel - old						
- including levy	98.6	101.2	105.3	109.9	117.5	112.0 (P)
- excluding levy	97.6	100.9	105.7	110.9	116.3	107.6 (P)
CEMENT AND CONCRETE						
Cement	92.6	100.0	108.8	114.7	128.4	138.5
Ready-mixed concrete	94.5	100.6	107.7	106.7	113.4	110.8
Plasterboard etc	96.5	100.1	99.3	101.8	104.7	..
Pre-cast concrete products	95.7	100.0	102.3	110.6	114.4	118.4
of which: Blocks, bricks, tiles & flagstones	95.6	100.0	103.3	112.8	115.4	121.1
Concrete re-inforcing bars	105.9	100.0	112.9	129.8	158.3	126.1 (P)
Fibre Cement Products	96.3	100.1	106.7	116.8	124.2	..
CLAY PRODUCTS						
All Bricks	92.3	98.0	104.3	111.1	109.0	117.2
Ceramic tiles	96.1	98.7	102.0	84.8	81.0	82.6
Ceramic sanitaryware	97.0	100.1	102.5	112.6	119.9	130.7
TIMBER AND JOINERY						
Imported Softwood	103.3	100.3	107.9	133.6	123.6	127.5
Imported Plywood	100.1	100.1	100.8	106.5	120.7	124.1
Sawn Wood	96.9	100.0	103.1	122.0	127.8	118.7
Particle Board	95.6	99.4	102.6	112.7	113.8	111.4 (P)
Builders woodwork	94.1	99.4	102.2	108.0	113.6	119.7
of which						
Doors & windows	97.0	99.7	101.7	108.7	116.7	127.1 (P)
METAL PRODUCTS						
Fabricated structural steel	89.1	100.0	99.8	118.1	137.2	105.9 (P)
Doors & windows	96.6	101.4	101.2	87.5	87.0	89.8
Screws etc	76.7	94.4	106.1	105.9	106.6	..
Other builders' ironmongery	97.7	99.9	102.4	105.3	108.5	..
Central heating boilers	97.4	99.9	102.3	105.0	106.3	109.8
Central heating pumps	99.0	100.7	108.2	114.5	120.2	..
Taps & valves (domestic)	85.5	98.7	136.6	152.1
Metal sanitaryware	96.0	100.0	103.5	108.3	106.3	..
Copper pipes	95.6	108.5	168.1	163.2	154.1	..
PLASTIC PRODUCTS						
Pipes and fittings (rigid)	93.9	99.2	103.9	112.2	118.1	121.4
Pipes and fittings (flexible)	95.2	99.8	104.4	110.6	115.3	129.9
Sanitaryware	98.1	100.2	100.9	102.6	112.0	113.6
Doors & windows	98.1	99.9	101.3	103.5	106.2	107.9 (P)
Floor covering	97.7	100.1	107.8	109.8
OTHER BUILDING MATERIALS						
Worked monumental or building stone	96.7	100.0	106.3
Asphalt products	89.9	98.4	120.6	132.2	140.4	151.4
Insulating materials (thermal or acoustic)	94.2	99.9	102.5	106.0	105.6	104.0
Paint (aqueous)	95.0	99.8	101.7	104.6	112.7	118.3
Paint (non-aqueous)	96.7	99.7	100.8	102.6	110.0	113.0
Lighting equipment for buildings	100.7	100.1	102.3	107.4
Lighting equipment for roads	85.5	99.5	98.7	100.9	105.2	112.3
Electric heating apparatus	99.4	100.0	101.8	105.4	112.0	..
Electric water heaters	88.9	100.4	111.6	119.8	122.3	132.6
Kitchen furniture	106.5	100.0	96.7	99.7	103.6	106.6

Source : ONS

Note : These indices, which are compiled by the Office for National Statistics, are a selection of producer price indices. The complete list is published monthly by HMSO in the Business Monitor MM22.

MINING AND QUARRYING

Table 4 : Sales of Sand and Gravel in Great Britain

Great Britain		Thousand tonnes						
		Sand		Gravel	Sand & Gravel	Sand, Gravel & Hoggin	Sand & Gravel	of which
		for Building	for Concreting	for Concreting & other uses	for Coating	for Fill	Total	Marine-Dredged
1999		10,664	29,276	28,735	2,184	10,968	81,827	13,468
2000		12,105	30,128	30,355	2,150	13,127	87,865	14,356
2001		13,926	33,675	36,799	2,596	10,460	97,456	13,611
2002		11,152	30,334	35,642	2,106	6,279	85,513	12,833
2003		11,515	31,412	31,739	1,493	6,594	82,753	12,249
2004		11,017	32,366	30,184	1,380	6,399	81,346	12,996
2005		12,419	30,704	30,648	1,557	5,173	80,501	13,025
2006		9,499	29,893	31,963	2,346	4,195	77,896	13,974
2007		8,649	29,803	31,114	1,695	4,254	75,515	13,777
2008		8,864	28,922	28,297	74,651	12,582
2009		7,270	21,582	58,482	9,589
2003	Q4	2,423	7,285	7,019	395	1,340	18,462	2,850
2004	Q1	2,672	7,599	6,703	283	1,454	18,711	2,673
	Q2	3,021	8,649	8,214	315	1,770	21,969	3,639
	Q3	2,889	8,528	8,230	372	1,632	21,651	3,563
	Q4	2,435	7,590	7,037	410	1,543	19,015	3,121
2005	Q1	3,141	7,180	7,271	376	986	18,954	3,040
	Q2	3,467	8,490	8,226	439	1,553	22,175	3,519
	Q3	3,246	8,054	8,201	398	1,422	21,321	3,491
	Q4	2,565	6,980	6,950	344	1,212	18,051	2,975
2006	Q1	2,189	7,100	7,058	523	919	17,789	2,927
	Q2	2,582	8,126	9,032	623	1,174	21,537	4,531
	Q3	2,603	7,725	8,602	640	1,144	20,714	3,498
	Q4	2,125	6,942	7,271	560	958	17,856	3,018
2007	Q1	2,081	6,919	7,242	443	904	17,589	3,177
	Q2	2,305	7,762	8,202	432	1,179	19,880	3,596
	Q3	2,304	7,829	8,191	398	1,162	19,884	3,675
	Q4	1,959	7,293	7,479	422	1,009	18,162	3,329
2008	Q1	2,151	7,156	7,286	379	1,180	18,152	3,035
	Q2	2,385	7,724	7,668	456	2,041	20,274	3,541
	Q3	2,279	7,644	7,091	19,341	3,337
	Q4	2,049	6,398	6,252	490	1,695	16,884	2,669
2009	Q1	1,727	5,313	5,330	695	1,566	14,631	2,389
	Q2	1,916	5,637	5,756	15,359	2,637
	Q3	1,992	5,598	14,878	2,457
	Q4	1,635	5,034	1,432	13,614	2,106

Note : The figures above are from a quarterly sample inquiry whereas those below are from the Annual Minerals Raised Inquiry, a census.

The two inquiries differ because some respondents are only able to provide estimated information for the quarterly inquiry.

1998		10,840	30,244	31,003	2,970	10,911	85,968	12,952
1999		11,356	31,730	31,614	2,585	10,924	88,209	13,424
2000		11,758	31,167	31,797	2,461	12,051	89,234	14,356
2001		11,515	31,656	35,135	2,257	7,647	88,210	13,611
2002		11,190	31,224	32,434	2,031	5,842	82,721	12,832
2003		11,851	31,411	30,236	1,766	4,957	80,221	12,131
2004		10,688	32,529	32,346	2,437	8,058	86,057	12,996
2005		11,558	29,848	32,163	2,172	6,651	82,392	13,024
2006		9,907	29,815	31,002	2,648	6,869	80,242	13,974
2007		9,877	30,202	29,350	2,636	6,436	78,501	13,777
2008		8,527	26,885	23,388	2,222	11,106	72,127	12,621

MINING AND QUARRYING

Table 5 : Sales of Sand and Gravel by Standard region, Wales and Scotland

	Sand		Gravel	Sand & Gravel	Sand, Gravel & Hoggin	Sand & Gravel	of which
	for Building	for Concreting	for Concreting & other uses	for Coating	for Fill	Total	Marine-Dredged
(a) Q4 2009							
North East	15	..	229
Yorkshire & the Humber	152	319	311	5	35	822	0
North West	192	255	..	26	..	538	32
West Midlands	219	656	734	..	80	1,712	0
East Midlands	132	639	628	29	56	1,484	0
East of England	194	..	928	149	261
South East	313	1,137	1,391	24	465	3,330	1,633
South West	125	523	246	1,265	105
Wales	121	164	70	62	31	448	176
Scotland	172	469	392	99	197	1,329	0
Great Britain	1,635	5,034	1,432	13,614	2,106
of which marine-dredged	111	966	101	2106	
(b) Q4 2008							
North East	69	121	7	..	116
Yorkshire & the Humber	102	388	371	..	84	945	27
North West	247	360	..	29	55	775	38
West Midlands	233	959	960	..	112	2,293	0
East Midlands	171	698	628	26	49	1,572	0
East of England	202	1,005	1,113	151	407	2,878	161
South East	532	1,277	1,908	..	190	3,952	1,938
South West	223	687	345	1,698	..
Wales	107	216	100	..	196
Scotland	163	687	532	132	250	1,764	0
Great Britain	2,049	6,398	1,695	16,884	2,669
of which marine-dredged	171	1,129	46	2,669	

Note : Regions refer to Government Office Regions

MINING AND QUARRYING

Thousand tonnes

	Sand		Gravel	Sand & Gravel	Sand, Gravel & Hoggin	Sand & Gravel	of which
	for Building	for Concreting	for Concreting & other uses	for Coating	for Fill	Total	Marine-Dredged
(c) Annual 2009							
North East	76
Yorkshire & the Humber	659	1,356	1,362	..	198	..	53
North West	811	1,055	..	104	..	2,327	132
West Midlands	885	2,855	3,104	..	287	..	0
East Midlands	542	2,630	2,609	114	318	6,213	0
East of England	619
South East	..	4,626	1,293	14,036	7,318
South West	..	2,314	987	..	451
Wales	537
Scotland	692	2,150	1,722	..	736	..	0
Great Britain	7,270	21,582	58,482	9,400
of which marine-dredged	524	4,200	9,400	
(d) Annual 2008							
North East	204
Yorkshire & the Humber	511	1,839	1,802	4,604	101
North West	1,070	1,587	..	116
West Midlands	987	3,917	4,071	9,594	0
East Midlands	725	3,349	2,832	7,235	0
East of England	902	4,378	4,885	510	2,315	12,990	703
South East	2,255	5,983	8,625	17,729	9,052
South West	780
Wales	647
Scotland	783	3,089	2,700	511	878	7,961	..
Great Britain	8,864	28,922	28,297	74,651	12,582
of which marine-dredged	738	5,727	5,816	12,582	

Note : Regions refer to Government Office Regions

MINING AND QUARRYING

Table 6 : Sales of Sand and Gravel by English & Welsh County and Scottish Region

Thousand tonnes

	2008		2009			
	Quarter 3	Quarter 4	Quarter 1	Quarter 2	Quarter 3	Quarter 4
NORTH EAST
Northumberland	154) 240	122	(97	99	283
Tyne and Wear *	45)		(21	22	..
Durham
Cleveland *
YORKSHIRE & THE HUMBER	1,128	945	1,100	934	..	822
North Yorkshire	643) 595	470	517	498	429
West Yorkshire	72)			43	34
South Yorkshire	184) 350	630	417	216	179
Humberside *	229)		180
NORTH WEST	..	775	606	615	568	538
Cumbria	180	168	150	153	145	138
Lancashire*	82	72	76	77	73	70
Merseyside *) 263	(63)	108	(35	35	32
Greater Manchester)	(168)		(76	74	70
Cheshire	333	304	272	274	241	228
WEST MIDLANDS	2,465	2,293	1,836	..	1,856	1,712
Shropshire	(216	203)	1,330	1,319	(152	..
Staffordshire	(1,497	1,395)			(1,196	1,098
West Midlands	(145	138)	308	104
Warwickshire	(333	301)		202	..	193
Hereford & Worcester	274	256	198	196	201	184
EAST MIDLANDS	1,832	1,572	1,410	1,666	1,653	1,484
Derbyshire	257	220	193) 745
Nottinghamshire	634	551	435)	515	464
Leicestershire	253	209	245	287	282	251
Northamptonshire	84	70	71) 634
Lincolnshire	604	522	466)	549	492
EAST OF ENGLAND	3,580	2,878	2,810	2,815
Cambridgeshire	757	624	580	598	587	519
Norfolk) 1,107	863	821	800	397	331
Suffolk *)			
Essex *	1,024	825	883
Bedfordshire) 692	566	526	539	(338	290
Hertfordshire)				(159
SOUTH EAST	4,580	3,952	3,403	3,695	3,608	3,330
Buckinghamshire	212	194	117	124	122	128
Oxfordshire	288	258	207	217	220	200
Berkshire	220	201	239	278	258	316
Greater London *	1,125	1,042	993	1,009	945	856
Surrey	335	299	246	253	257	220
Kent *	1,128	871	741	928	909	779
Sussex East *) 424	347
Sussex West *)	
Hampshire *	(848	740	(607	623	623	575
Isle of Wight *	((20	20	20	..

Note : Regions refer to Government Office Regions

* Includes marine-dredged.

MINING AND QUARRYING

Thousand tonnes

	2008		2009			
	Quarter 3	Quarter 4	Quarter 1	Quarter 2	Quarter 3	Quarter 4
SOUTH WEST	1,717	1,555	1,418	1,265
Gloucestershire	311	289	241	314	273	235
Wiltshire) 441	383	273	227	203	175
Avon *)
Somerset *	(..
Dorset *	(..
Devon *	(456
Cornwall	(..
ENGLAND	16,533	14,465	12,733	13,312	12,981	11,837
WALES	691	463	448
Clwyd	244)	343
Gwynedd *	195))	26
Powys		0)		0	0	0
Dyfed *)	174
Glamorgan West *	86)	
Glamorgan South *	..)	138	139
Gwent *	102)			105	79	80
SCOTLAND	2,117	1,434	1,329
South of Scotland	200	171	133	136	131	124
North East Scotland	282	239	156	160	145	144
Highlands	177	147	131	135	123	119
Island Areas	27	23	21	21	19	19
East Central Scotland	154	128	104	107	99	97
West Central Scotland	720	601	483	511	501	453
Tayside and Fife	557	455	420	444	416	373
GREAT BRITAIN	19,341	16,884	14,631	15,359	14,878	13,614

Note : Regions refer to Government Office Regions

* Includes marine-dredged.

MINING AND QUARRYING

Table 7 : Slate - Production, Deliveries and Stocks

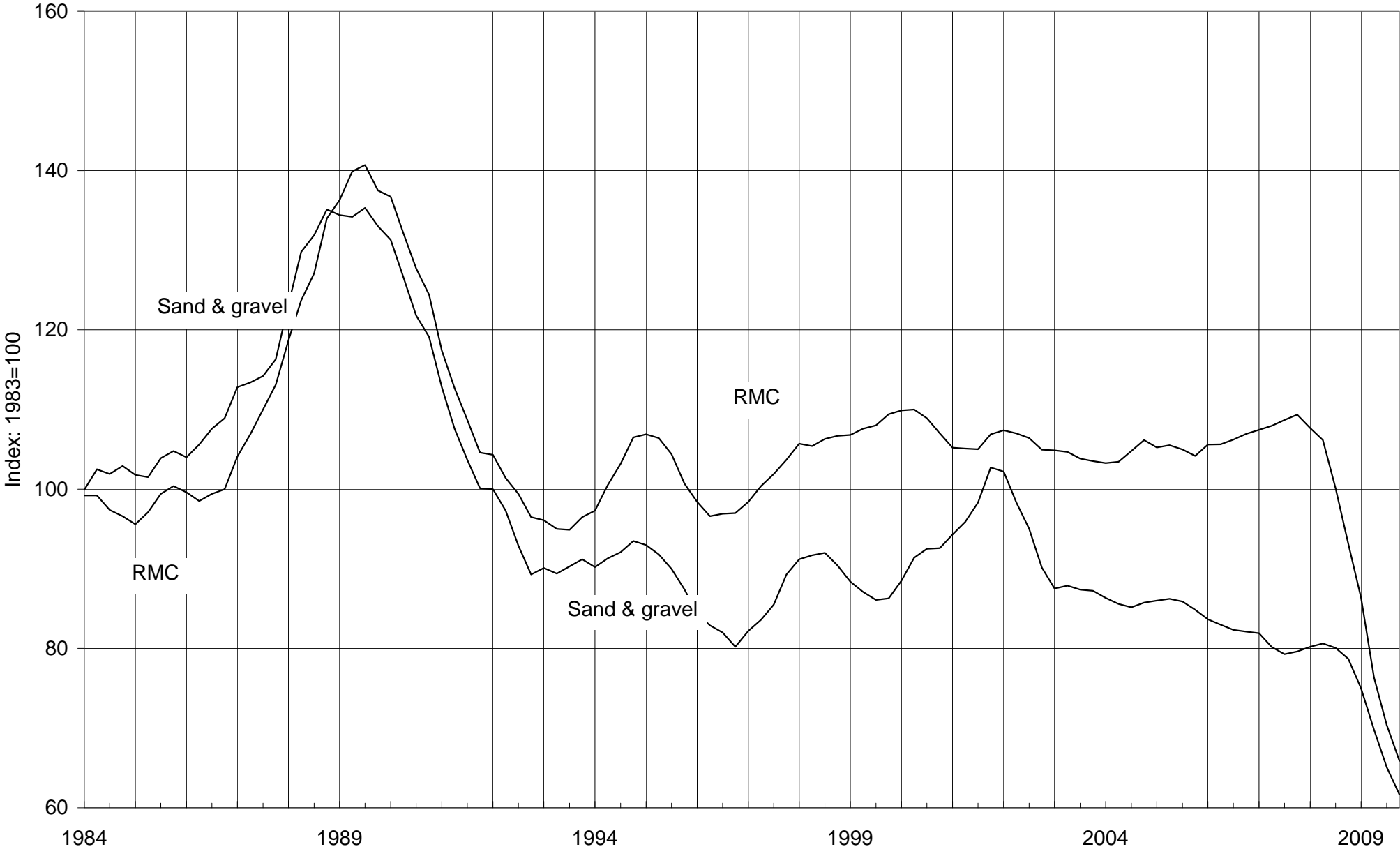
Great Britain		Tonnes									
		Production			Deliveries			Stocks (a)		Deliveries	
		Roofing (b)	Other (c)	Powder & Granules	Roofing (b)	Other (c)	Powder & Granules	Roofing (b)	Other (c)	Powder & Fill & Granules	Other Uses
1998		29,140	17,019	58,740	26,069	17,275	59,205	15,423	1,936	3,911	253,707
1999		28,265	18,733	51,872	33,569	13,740	52,648	10,049	6,829	3,135	190,581
2000		28,815	12,399	44,644	33,341	11,670	44,923	5,519	7,356	2,856	328,547
2001		30,770	14,834	47,521	33,052	13,586	47,588	3,159	8,465	2,799	383,353
2002		32,182	18,348	44,424	32,653	19,069	43,947	2,674	7,850	3,275	498,212
2003		34,471	15,623	29,003	34,700	14,576	29,240	2,477	8,849	3,416	669,818
2004	
2005	
2006 (P)		..	61,612	22,967	..	64,037	22,719	..	6,454	4,274	860,395
2007		..	65,260	19,141	..	62,646	19,431	2,563	2,521	3,746	..
2008		..	59,644	16,915	..	58,129	18,402	..	2,749	2,253	..
2009		..	33,759	9,150	22,555	34,322	10,637	..	2,186	766	615,346
2001	Q4	8,622	3,950	11,911	9,762	3,438	11,367	3,159	8,465	2,799	80,557
2002	Q1	8,504	3,554	9,948	8,348	3,756	9,367	3,315	8,281	3,379	94,193
	Q2	7,480	6,687	11,471	7,508	6,869	11,876	3,273	8,182	2,974	148,357
	Q3	7,496	3,767	11,714	7,699	4,141	12,174	3,070	7,813	2,514	122,840
	Q4	8,702	4,340	11,291	9,098	4,303	10,530	2,674	7,850	3,275	132,822
2003	Q1	8,436	3,492	8,077	7,545	3,108	7,887	3,570	8,188	3,417	177,974
	Q2	8,635	4,364	7,335	9,028	4,132	7,230	3,177	8,420	3,523	172,954
	Q3	8,195	4,120	6,685	8,679	4,196	7,333	2,693	8,344	2,875	151,403
	Q4	9,205	3,647	6,906	9,448	3,140	6,790	2,477	8,849	3,416	167,487
2004	Q1	9,397	4,432	7,288	8,379	4,619	7,460	3,469	8,777	3,242	158,552
	Q2	9,031	3,596	8,083	10,135	3,499	7,328	2,365	8,874	3,997	154,407
	Q3	..	8,029	7,544	..	8,578	7,049	3,954	8,225	4,592	158,333
	Q4
2005	Q1
	Q2
	Q3
	Q4	..	13,635	7,448	..	6,194	7,635	2,824	10,281	5,347	124,188
2006	Q1	..	11,594	6,575	..	12,879	6,406	3,170	8,967	5,440	195,762
	Q2	..	14,804	5,051	..	14,983	5,257	3,079	7,424	3,990	223,696
	Q3	..	16,170	5,194	..	16,803	5,094	..	6,792	4,090	251,314
	Q4 (P)	..	19,044	6,147	..	19,372	5,962	..	6,454	4,274	189,623
2007	Q1	..	17,787	5,571	..	16,829	5,036	6,984	4,996	4,571	376,876
	Q2	..	16,577	4,315	..	14,765	4,875	3,066	5,850	4,011	346,426
	Q3	..	16,017	4,672	..	15,475	4,929	2,977	6,391	3,754	..
	Q4	..	14,879	4,583	..	15,577	4,591	2,563	2,521	3,746	255,249
2008	Q1	..	18,608	4,282	..	18,071	4,414	..	3,059	3,594	246,495
	Q2	..	15,465	4,738	..	14,457	4,862	..	3,801	3,484	..
	Q3	..	13,811	3,843	..	13,841	5,511	3,851	2,749	1,816	..
	Q4	..	11,760	4,052	..	11,760	3,615	..	2,749	2,253	..
2009	Q1	..	7,370	2,128	5,315	7,688	2,724	..	2,431	1,658	148,722
	Q2	5,084	9,124	2,046	5,328	9,319	3,385	4,142	2,236	318	169,661
	Q3	5,503	8,263	2,046	6,534	8,267	2,163	3,111	2,232	201	154,862
	Q4	4,687	9,002	2,930	5,378	9,048	2,365	2,420	2,186	766	142,101

Note : From Q1 1995, the coverage of 'powder & granules' has been extended to include non-quarry manufacture; and 'crude blocks' are included in 'other' manufacture slate.

- (a) Refers to stocks at the end of the period.
- (b) Consists of all slate tiles which could be used as roofing tiles.
- (c) Consists of all slate products for cladding and decorative uses

Deliveries of Sand & Gravel and RMC

4-quarter moving average



The data is taken from Tables 4 & 13

Table 8 : Cement & Clinker - Production, Deliveries and Stocks

Great Britain

Thousand tonnes

		Cement					Cementitious Material		Clinker
		Production	Exports	Deliveries	Imports (into GB)		other	total	Production
		of which	(from GB)	(into GB from GB production)	by 'Manuf.	by Others**			
2004		11,405	141	11,074	609	825	2,443	14,951	10,402
2005		11,216	110	11,004	306	971	2,385	14,666	10,074
2006		11,469	127	11,221	124	1,089	2,648	15,082	10,069
2007		11,887	74	11,638	255	1,121	2,769	15,783	10,227
2008		10,071	61	9,937	283	1,084	2,432	13,660	8,700
2009		7,622	20	7,474	99	6,421
2004	Q1	2,623	31	2,683	138	196	554	3,571	2,153
	Q2	3,023	40	2,875	176	220	625	3,896	2,711
	Q3	2,971	36	2,863	185	219	688	3,955	2,841
	Q4	2,788	34	2,653	110	190	576	3,529	2,697
2005	Q1	2,544	21	2,555	104	225	547	3,431	2,193
	Q2	3,024	30	2,986	70	264	632	3,952	2,669
	Q3	2,940	29	2,923	77	264	666	3,930	2,576
	Q4	2,708	30	2,540	55	218	540	3,353	2,636
2006	Q1	2,647	25	2,737	28	269	601	3,635	2,127
	Q2	2,981	30	2,895	32	268	692	3,887	2,622
	Q3	2,990	37	2,917	40	303	732	3,992	2,654
	Q4	2,851	35	2,672	24	249	623	3,568	2,666
2007	Q1	2,678	27	2,779	43	271	643	3,735	2,021
	Q2	3,188	22	3,061	59	297	701	4,117	2,812
	Q3	3,130	9	3,011	84	294	746	4,135	2,751
	Q4	2,891	16	2,787	69	259	681	3,796	2,643
2008	Q1	2,609	18	2,551	88	268	598	3,505	2,267
	Q2	2,803	18	2,816	94	327	682	3,917	2,366
	Q3	2,520	13	2,496	72	263	648	3,445	2,202
	Q4	2,139	12	2,074	29	226	505	2,793	1,865
2009	Q1	1,762	13	1,782	37	256	410	2,485	1,379
	Q2	2,004	1	1,970	20	279	451	2,721	1,587
	Q3	1,998	5	1,999	25	283	453	2,760	1,831
	Q4	1,858	1	1,723	17	1,624
2008	Dec	547	4	518	20	488
2009	Jan	516	4	505	21	280
	Feb	545	4	570	0	532
	Mar	701	5	707	16	567
	Apr	618	0	637	4	500
	May	711	0	629	8	624
	Jun	675	1	704	8	463
	Jul	705	1	697	8	726
	Aug	637	2	606	8	595
	Sep	656	2	696	9	510
	Oct	758	0	696	9	619
	Nov	667	1	605	4	596
	Dec	433	0	422	4	409

NB Where the coverage is for Great Britain, the figures for imports & exports are defined accordingly and have been estimated.

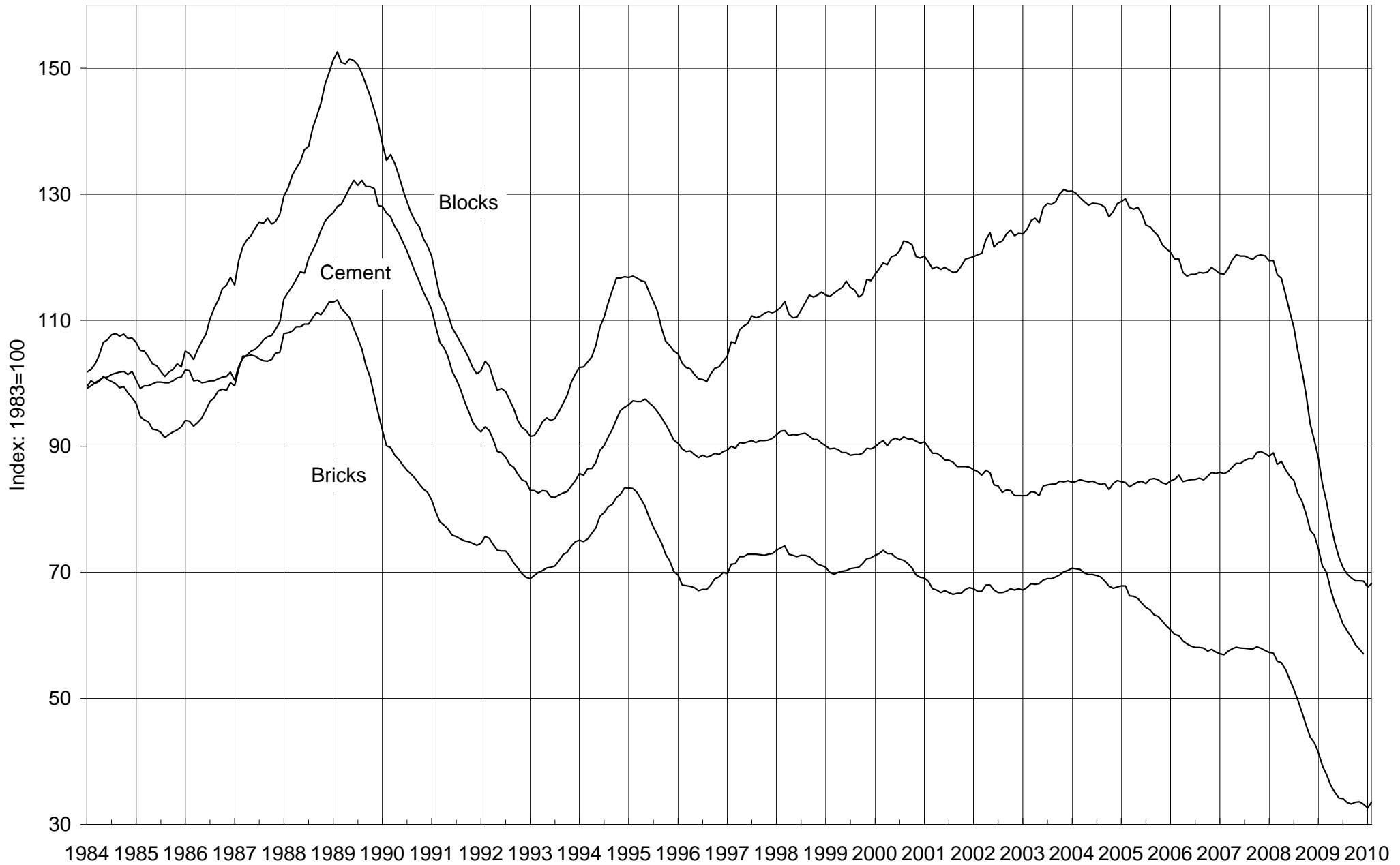
Cementitious material covers cement itself, pulverised fuel ash (pfa) to BS 3892 Part 1 and ground granulated blast-furnace slag (ggbs) to BS 6699

* Refers to stocks at end of period

** Estimated

Deliveries of Bricks, Blocks & Cement

12-month moving totals



The data is taken from tables 8, 9 and 11

Table 9 : Bricks - Production, Deliveries and Stocks

Great Britain

	Production	Deliveries (from)	Stocks*	Production	Deliveries (from)	Stocks*
(a) Brick Type						
	All Types			Commons		
2005	2,748	2,570	791	319	304	117
2006	2,510	2,399	906	304	284	137
2007	2,471	2,409	965	305	291	150
2008	1,929	1,796	1,105	246	242	151
2009	1,216 (R)	1,388	921	187	200 (R)	134
2008 Q4	291	333	1,105	42	53	151
2009 Q1	288	289	1,102	50	42	160
Q2	375	383	1,091	53	59	151
Q3	321	384	1,028	47	55	143
Q4	231 (R)	331 (R)	921	36	45	134
2009 February	95	81	1,098	21	13	163
March	132	127	1,102	15	18	160
April	114	121	1,092	15	20	151
May	122	126	1,088	16	20	147
June	140	137	1,091	22	18	151
July	106	141	1,057	16	23	144
August	84	107	1,034	15	12	147
September	131	137	1,028	16	20	143
October	120	137	1,011	18	21	140
November	71	111	964	11	15	136
December	40 (H)	83	921	7 (H)	9	134
2010 January	62	58	923	12	8	135
February (P)	97	119	901	14	15	134
(b) Material Type						
	All Materials			Clay#		
2005	2,748	2,570	791	2,601	2,419	776
2006	2,510	2,399	906	2,359	2,254	887
2007	2,471	2,409	965	2,312	2,249	947
2008	1,929	1,796	1,105	1,814	1,676	1,093
2009	1,216 (R)	1,388	921
2008 Q4	291	333	1,105	279	308	1,093
2009 Q1	288	289	1,102	263	273	1,082
Q2	375	383	1,091	351	358	1,072
Q3	321	384	1,028	300	357	1,015
Q4	231 (R)	331 (R)	921
2009 February	95	81	1,098	81	75	1,076
March	132	127	1,102	126	120	1,082
April	114	121	1,092	108	111	1,076
May	122	126	1,088	116	117	1,075
June	140	137	1,091	127	130	1,072
July	106	141	1,057	99	129	1,043
August	84	107	1,034	75	101	1,017
September	131	137	1,028	126	128	1,015
October	120	137	1,011	113	128	1,000
November	71	111	964
December	40 (R)	83	921
2010 January	62	58	923
February (P)	97	119	901

* Refers to stocks at end of period

#Sand-lime bricks are included with clay bricks

Millions

Production	Deliveries (from)	Stocks*	Production	Deliveries (from)	Stocks*		
						(a) Brick Type	
Facings			Engineering				
2,202	2,056	625	227	210	48	2005	
2,013	1,923	710	193	192	58	2006	
1,950	1,906	753	216	212	62	2007	
1,514	1,386	895	170	168	58	2008	
927	1,079	735	103	109	52	2009	
219	248	895	30	33	58	2008	Q4
214	226	881	24	21	61	2009	Q1
291	293	880	31	32	60		Q2
246	296	830	29	33	55		Q3
176	264	735	19	22	52		Q4
63	62	872	10	6	63	2009	February
107	98	881	9	11	61		March
90	91	881	9	10	60		April
93	94	879	12	11	62		May
108	108	880	10	11	60		June
80	105	855	10	12	58		July
63	85	833	6	10	54		August
103	106	830	12	11	55		September
95	108	817	7	8	54		October
52	87	775	8	9	54		November
29 (H)	69	735	4	5	52		December
47	47	735	4	3	53	2010	January
76	96	714	8	8	53		February (P)
						(b) Material Type	
Sand-Lime#			Concrete				
..	147	151	15	2005	
..	150	146	19	2006	
..	159	160	18	2007	
..	115	120	11	2008	
..	2009	
..	12	26	11	2008	Q4
..	25	17	20	2009	Q1
..	24	26	18		Q2
..	21	27	13		Q3
..		Q4
..	14	6	21	2009	February
..	5	7	20		March
..	6	11	15		April
..	6	8	12		May
..	13	7	18		June
..	7	12	14		July
..	9	6	17		August
..	5	9	13		September
..	7	9	11		October
..		November
..		December
..	2010	January
..		February (P)

Table 10 : Brick Production, Deliveries and Stocks by English region, Wales and Scotland

	North East	Yorks & Humber	North West	West Midlands	East Midlands	East of England
(a) Commons				#		#
Production						
2009	30,811	..
2009 Q1	2,850	2,968	6,202	..
Q2	..	1,852	2,998	2,894	9,574	..
Q3	8,710	..
Q4	..	1,593	2,407	..	6,325	..
2010 January	..	252	379	387	1,871	..
Deliveries (from)						
2009	..	5,662	10,734	12,544	34,205	..
2009 Q1	..	961	2,004	2,623	7,422	..
Q2	..	1,888	3,150	3,434	8,749	..
Q3	..	1,354	3,064	3,501	9,618	..
Q4	..	1,459	2,516	2,986	8,416	..
2010 January	..	174	340	281	1,801	..
Stocks *						
2009	1,266	3,775	4,914	..	9,519	..
2009 Q1	1,971	4,553	5,947	5,225	11,693	..
Q2	1,984	4,487	5,795	..	12,518	..
Q3	1,807	3,839	5,023	..	11,610	..
Q4	1,266	3,775	4,914	3,407	9,519	..
2010 January	1,357	3,853	4,953	3,513	9,589	..
(b) Facings						
Production						
2009	79,921	260,518
2009 Q1	23,677	60,011
Q2	..	15,157	25,237	80,023
Q3	..	13,302	20,626	68,419
Q4	..	15,123	10,381	52,065
2010 January	..	2,379	..	10,352	11,413	..
Deliveries (from)						
2009	..	78,906	83,061	296,711
2009 Q1	..	16,629	19,133	63,601	37,890	..
Q2	..	22,432	23,450	77,160	51,408	..
Q3	..	21,572	21,296	80,468
Q4	..	18,273	19,182	75,482
2010 January	..	3,139	3,658	13,664
Stocks *						
2009	95,634	146,720
2009 Q1	..	61,226	103,318	185,764
Q2	105,105	189,013
Q3	104,435	176,810
Q4	50,225	42,759	95,634	146,720
2010 January	48,873	41,999	93,942	143,408
(c) Engineering #						
Production						
2009
2009 Q1
Q2	17,752
Q3	18,427
Q4	9,760	0	..
2010 January	0	1,496	0	..
Deliveries (from)						
2009	60,002
2009 Q1	11,086
Q2	18,293
Q3	19,935
Q4	10,688
2010 January	1,468
Stocks *						
2009	11,641
2009 Q1	14,618
Q2	14,077
Q3	12,569
Q4	11,641
2010 January	11,791

Note : Regions now use Government Office boundaries

* Refers to stocks at end of period.

Thousands

South East	South West	England	Wales	Scotland	Great Britain	
#	#					
..	187,845	(a) Commons
..	50,382	Production
..	53,075	2009 Q1
..	46,852	Q2
..	36,382	Q3
..	592	11,713	Q4
..	2010 January
..	200,733	Deliveries (from)
..	42,230	2009 Q1
..	58,455	Q2
..	55,072	Q3
1,285	45,095	Q4
..	8,202	2010 January
4,048	1,833	133,841	Stocks *
5,344	2,465	159,541	2009 Q1
4,450	1,980	150,767	Q2
4,226	1,839	142,782	Q3
4,048	1,833	133,841	Q4
..	1,996	134,835	2010 January
..	927,211	(b) Facings
46,652	213,576	Production
58,375	291,206	2009 Q1
44,897	9,106	245,904	Q2
..	176,278	Q3
..	46,746	Q4
..	2010 January
192,997	1,078,666	Deliveries (from)
41,324	9,536	..	2,761	..	225,556	2009 Q1
52,089	12,518	..	4,012	..	292,708	Q2
54,280	13,911	..	3,716	..	295,899	Q3
45,304	264,292	Q4
8,251	1,646	46,869	2010 January
105,492	23,766	3,324	735,338	Stocks *
121,030	31,637	5,798	881,659	2009 Q1
127,316	30,122	4,145	879,854	Q2
117,933	25,317	3,254	829,785	Q3
105,492	23,766	3,324 (R)	735,338	Q4
105,403	25,425	3,256	735,215	2010 January
..	102,842	(c) Engineering #
..	0	24,268	Production
..	0	30,917	2009 Q1
..	0	28,619	Q2
..	19,046	Q3
..	0	3,615	Q4
..	2010 January
..	108,931	Deliveries (from)
..	21,422	2009 Q1
..	0	32,135	Q2
..	0	33,078	Q3
..	22,287	Q4
..	3,255	2010 January
..	52,157	Stocks *
..	60,979	2008
..	59,761	2009 Q1
..	55,285	Q2
..	52,157	Q3
..	52,157	Q4
..	52,517	2010 January

Engineering bricks : South West are included with West Midlands and East of England are included with South East.

Table 10 (cont'd) : Brick Production, Deliveries and Stocks by English region, Wales and Scotland

	North East	Yorks & Humber	North West	West Midlands	East Midlands	East of England
(d) All Bricks						
Production						
2008	118,057	139,693	210,068	489,004	309,798	202,934
2009	132,132
2008 Q4	32,715	..	42,475	..
2009 Q1
Q2	100,597
Q3
Q4
2009 January
February	26,560
March	38,816
April	31,626
May	31,061
June	37,910
July	16,368	..
August	23,132
September	39,002
October	9,105
November
December
2010 January	12,235	13,284	..
Deliveries (from)						
2008	99,754	122,715	187,491	450,347	275,615	203,987
2009
2008 Q4	86,219
2009 Q1	77,232
Q2	98,820
Q3	103,857
Q4
2009 January	22,817
February	21,152
March	33,263
April	30,137
May	31,004
June	37,679
July	36,515
August	31,164
September	36,178
October	35,131
November	31,134
December
2010 January	15,413
Stocks *						
2008	70,792	98,203	111,358	208,531	200,674	223,667
2009
2008 Q4
2009 Q1
Q2
Q3	193,665
Q4	161,762
2009 January
February	200,047
March	205,600
April
May
June
July	199,344
August	191,312
September	193,665
October	194,685
November	175,217
December	161,762
2010 January	158,584

Note : Regions now use Government Office boundaries

* Refers to stocks at end of period.

BRICKS

Thousands

South East	South West	England	Wales	Scotland	Great Britain	
						(d) All Bricks
						Production
270,658	69,840	1,810,052	72,020	47,196	1,929,268	2008
..	1,216,780	2009
..	290,799	2008 Q4
..	288,226	2009 Q1
..	375,198	Q2
..	321,375	Q3
..	231,706	Q4
10,741	61,535	2009 January
..	94,973	February
24,082	131,718	March
..	114,288	April
..	121,549	May
..	139,361	June
..	106,182	July
..	84,143	August
..	131,050	September
..	5,716	119,605	October
..	71,389	November
..	40,712	December
..	62,074	2010 January
						Deliveries (from)
242,074	76,006	1,657,989	84,213	53,873	1,796,075	2008
..	1,388,330	2009
..	333,185	2008 Q4
..	289,208	2009 Q1
..	383,298	Q2
..	384,049	Q3
..	331,674	Q4
..	2,388	..	81,171	2009 January
..	80,979	February
..	3,951	..	127,058	March
..	121,215	April
..	125,564	May
..	136,509	June
..	140,681	July
..	106,601	August
..	136,767	September
..	137,224	October
..	111,197	November
..	83,253	December
..	58,326	2010 January
						Stocks *
121,212	31,483	1,065,920	24,146	14,805	1,104,871	2008
..	921,336	2009
..	1,104,871	2008 Q4
..	1,102,179	2009 Q1
..	1,090,382	Q2
..	1,027,852	Q3
..	921,336	Q4
..	1,083,525	2009 January
..	1,097,519	February
126,374	1,102,179	March
..	1,091,555	April
..	34,381	1,087,634	May
..	1,090,382	June
..	1,056,509	July
..	26,572	1,034,051	August
..	27,156	1,027,852	September
..	27,419	1,010,837	October
..	963,877	November
..	921,336	December
..	922,567	2010 January

Engineering bricks : South West are included with West Midlands and East of England are included with South East

CONCRETE PRODUCTS

Table 11 : Concrete Blocks - Production, Deliveries and Stocks

Great Britain

	All Types			Dense		
	Production	Deliveries (from)	Stocks*	Production	Deliveries (from)	Stocks*
1999	87,767	85,851	9,109	38,439	38,255	4,431
2000	90,219	88,529	9,594	37,629	37,013	4,368
2001	87,922	88,509	8,842	36,598	36,518	4,258
2002	91,474	91,342	9,014	35,744	36,019	3,963
2003	95,675	96,383	8,513	36,775	37,175	3,684
2004	96,256	21,721	10,088	9,300	8,781	3,690
2005	89,997	89,551	9,680	36,188	36,473	3,465
2006	87,510	87,015	..	34,956	34,741	..
2007	89,951	88,746	..	36,686	35,396	..
2008	67,743	67,136	8,920	29,675	29,889	3,498
2009	50,394	50,639	8,320	22,607	22,748	3,291
2004 Q4	22,731	21,721	10,088	9,300	8,781	3,690
2005 Q1	23,135	21,992	11,297	9,336	8,979	4,116
Q2	23,828	24,386	9,817	9,635	9,960	3,707
Q3	22,847	23,454	9,123	9,231	9,526	3,463
Q4	20,186	19,720	9,680	7,985	8,008	3,465
2006 Q1	21,155	20,820	..	8,536	8,160	..
Q2	22,435	22,560	..	8,903	8,903	..
Q3	22,615	23,611	..	9,384	9,599	..
Q4	21,305	20,023	..	8,133	8,079	..
2007 Q1	22,014	21,057	..	8,714	8,141	..
Q2	22,532	24,033	..	9,268	9,531	..
Q3	23,248	23,184	..	9,727	9,283	..
Q4	22,157	20,472	..	8,978	8,442	..
2008 Q1	21,131	18,855	11,749	8,564	7,853	5,075
Q2	20,231	19,714	11,977	8,767	8,677	5,107
Q3	14,894	16,309	10,224	7,131	7,576	4,479
Q4	11,487	12,259	8,920	5,214	5,783	3,498
2009 Q1	12,094	11,649	9,161	5,635	5,438	3,628
Q2	13,463	13,191	9,455	6,192	6,032	3,821
Q3	12,771	13,924	8,203	5,811	6,255	3,390
Q4	12,066	11,874	8,320	4,969	5,023	3,291
2008 February	6,955	6,665	..	2,863	2,804	..
March	6,965	6,597	11,749	2,709	2,710	5,075
April	7,213	7,000	..	3,087	2,932	..
May	6,385	6,396	..	2,789	2,753	..
June	6,633	6,318	11,977	2,891	2,992	5,107
July	5,687	6,016	..	2,610	2,808	..
August	4,410	5,014	..	2,311	2,397	..
September	4,796	5,279	10,224	2,210	2,370	4,479
October	4,616	5,178	..	2,142	2,453	..
November	4,035	4,057	..	1,841	1,922	..
December	2,836	3,024	8,920	1,231	1,408	3,498
2009 January	3,750	3,561	..	1,835	1,637	..
February	3,802	3,540	..	1,745	1,687	..
March	4,543	4,548	9,161	2,055	2,114	3,628
April	4,580	4,447	..	2,077	2,028	..
May	4,158	4,144	..	1,911	1,884	..
June	4,725	4,600	9,455	2,203	2,119	3,821
July	4,740	4,863	..	2,111	2,172	..
August	3,417	4,264	..	1,642	1,933	..
September	4,614	4,797	8,203	2,058	2,151	3,390
October	4,740	4,818	..	1,930	2,006	..
November	4,372	4,072	..	1,782	1,720	..
December	2,954	2,984	8,320	1,258	1,297	3,291
2010 January (P)	3,017	2,884	..	1,291	1,205	..
February (P)	4,281	3,913	..	1,839	1,699	..

* Refers to stocks at end of period

CONCRETE PRODUCTS

Thousand square metres

Lightweight			Aerated				
Production	Deliveries (from)	Stocks*	Production	Deliveries (from)	Stocks*		
20,830	20,828	1,858	28,497	26,768	2,820	1999	
22,991	22,638	2,169	29,599	28,878	3,058	2000	
22,684	22,670	2,207	28,639	29,320	2,377	2001	
23,478	23,537	2,188	32,252	31,786	2,863	2002	
24,991	25,161	2,107	33,909	34,047	2,721	2003	
6,516	6,222	2,271	6,916	6,718	4,127	2004	
25,561	25,673	2,173	28,248	27,405	4,042	2005	
25,345	25,222	2,303	27,209	27,051	3,622	2006	
25,965	25,667	2,434	27,300	27,682	2,906	2007	
18,168	18,363	2,149	19,900	18,884	3,273	2008	
13,421	13,989	1,522	14,367	13,903	3,507	2009	
6,516	6,222	2,271	6,916	6,718	4,127	2004	Q4
6,389	6,315	2,365	7,410	6,699	4,816	2005	Q1
6,690	6,935	2,109	7,503	7,491	4,001		Q2
6,623	6,730	2,005	6,993	7,197	3,655		Q3
5,859	5,693	2,173	6,342	6,019	4,042		Q4
6,262	6,179	2,251	6,357	6,481	3,778	2006	Q1
6,125	6,342	2,035	7,406	7,315	3,796		Q2
6,699	6,781	1,967	6,532	7,231	2,907		Q3
6,258	5,920	2,303	6,914	6,024	3,622		Q4
6,418	6,437	2,270	6,883	6,479	3,937	2007	Q1
6,572	6,867	1,946	6,692	7,636	3,056		Q2
6,757	6,616	1,970	6,764	7,286	2,397		Q3
6,217	5,748	2,434	6,962	6,282	2,906		Q4
5,580	5,389	2,633	6,988	5,612	4,041	2008	Q1
5,421	5,405	2,549	6,043	5,632	4,321		Q2
4,110	4,309	2,338	3,653	4,424	3,406		Q3
3,057	3,260	2,149	3,216	3,216	3,273		Q4
3,213	3,258	2,181	3,247	2,953	3,352	2009	Q1
3,498	3,553	2,125	3,773	3,607	3,510		Q2
3,293	3,765	1,544	3,667	3,903	3,269		Q3
3,416	3,412	1,522	3,681	3,439	3,507		Q4
1,771	1,848	..	2,320	2,013	..	2008	February
1,889	1,924	2,633	2,367	1,963	4,041		March
2,041	1,970	..	2,086	2,098	..		April
1,700	1,868	..	1,896	1,775	..		May
1,681	1,567	2,549	2,061	1,759	4,321		June
1,543	1,580	..	1,535	1,627	..		July
1,308	1,320	..	791	1,297	..		August
1,259	1,409	2,338	1,328	1,500	3,406		September
1,275	1,437	..	1,199	1,288	..		October
1,023	1,087	..	1,172	1,048	..		November
760	736	2,149	846	880	3,273		December
890	998	..	1,025	927	..	2009	January
954	967	..	1,103	887	..		February
1,369	1,293	2,181	1,118	1,140	3,352		March
1,186	1,198	..	1,318	1,221	..		April
1,091	1,124	..	1,155	1,136	..		May
1,221	1,231	2,125	1,301	1,250	3,510		June
1,171	1,275	..	1,458	1,416	..		July
895	1,152	..	881	1,180	..		August
1,227	1,339	1,544	1,328	1,308	3,269		September
1,379	1,411	..	1,431	1,401	..		October
1,300	1,173	..	1,290	1,178	..		November
737	828	1,522	959	859	3,507		December
705	732	..	1,021	947	..	2010	January (P)
1,290	1,093	..	1,152	1,122	..		February (P)

CONCRETE PRODUCTS

Table 12 : Concrete Blocks : Production, Deliveries and Stocks by English Region, Wales and Scotland

		North East	Yorks & Humber	North West	West Midlands	East Midlands	East of England
(a) Dense aggregate							
Production							
2009		395	..	2,865
2008	Q4	93	603	660	..	620	..
2009	Q1	105	..	711
	Q2	110	..	766
	Q3	83	651	733	..	459	..
	Q4	97	..	655
Deliveries (from)							
2009		390	..	3,061
2008	Q4	..	591	760	..	650	347
2009	Q1	112	563	677	166
	Q2	105	..	788
	Q3	98	658	973	..	516	..
	Q4	75	..	623
Stocks *							
2009		64	307	304
2008	Q4	65	349	512	..	392	..
2009	Q1	58	284	546	..	447	..
	Q2	63	327	524	..	534	..
	Q3	76	320	273	..	478	..
	Q4	64	307	304
(b) Other (1)							
Production							
2009		1,178	..	1,470
2008	Q4	248	1,299	349	..	887	..
2009	Q1	285	..	353
	Q2	336	..	409
	Q3	288	1,442	371	..	1,129	..
	Q4	269	..	337
Deliveries (from)							
2009		1,180	..	1,540
2008	Q4	..	1,315	374	..	1,058	1,026
2009	Q1	289	..	367
	Q2	309	..	401	..	1,207	..
	Q3	323	1,690	407	..	1,291	..
	Q4	259	..	365
Stocks *							
2009		125	937	176
2008	Q4	129	1,477	352	..	446	..
2009	Q1	125	1,131	337	..	487	..
	Q2	151	1,150	345	..	484	..
	Q3	115	904	203	..	321	..
	Q4	125	937	176
(c) Total							
Production							
2009		1,573	8,248	4,335	3,015	6,986	5,208
2008	Q4	341	1,902	1,009	687	1,507	1,207
2009	Q1	390	1,710	1,064	635	1,788	1,216
	Q2	446	2,273	1,175	801	1,892	1,348
	Q3	371	2,093	1,104	833	1,588	1,347
	Q4	366	2,172	992	746	1,718	1,297
Deliveries (from)							
2009		1,570	8,454	4,601	3,059	7,028	5,602
2008	Q4	368	1,906	1,134	648	1,708	1,373
2009	Q1	401	1,746	1,044	581	1,692	1,273
	Q2	414	2,210	1,189	752	1,809	1,474
	Q3	421	2,346	1,380	941	1,807	1,552
	Q4	334	2,152	988	785	1,720	1,303
Stocks *							
2009		189	1,244	480	880	797	627
2008	Q4	194	1,826	864	789	838	985
2009	Q1	183	1,415	883	979	934	979
	Q2	214	1,477	869	1,028	1,018	846
	Q3	191	1,224	476	918	799	637
	Q4	189	1,244	480	880	797	627

Note : Regions refer to Government Office Regions

* Refers to stocks at end of period.

CONCRETE PRODUCTS

Thousand square metres

South East	South West	England	Wales	Scotland	Great Britain		
						(a) Dense aggregate	
						Production	
..	5,228	17,729	2,838	2,040	22,607	2009	
..	1,091	4,040	726	448	5,214	2008	Q4
..	1,309	4,357	717	561	5,635	2009	Q1
..	1,390	4,906	730	556	6,192		Q2
635	1,351	4,463	789	559	5,811		Q3
..	1,178	4,003	602	364	4,969		Q4
						Deliveries (from)	
..	..	17,776	2,862	2,110	22,748	2009	
..	1,277	4,516	731	536	5,783	2008	Q4
..	..	4,242	702	494	5,438	2009	Q1
..	..	4,662	781	589	6,032		Q2
712	1,344	4,935	753	567	6,255		Q3
..	1,121	3,937	626	460	5,023		Q4
						Stocks *	
..	942	2,497	530	274	3,291	2009	
279	674	2,593	509	396	3,498	2008	Q4
..	748	2,651	524	453	3,628	2009	Q1
..	853	2,985	517	419	3,821		Q2
185	856	2,427	552	411	3,390		Q3
..	942	2,487	530	274	3,291		Q4
						(b) Other (1)	
						Production	
..	822	27,276	222	289	27,787	2009	
..	152	6,062	112	99	6,273	2008	Q4
..	161	6,261	86	112	6,459	2009	Q1
..	191	7,146	44	81	7,271		Q2
1,744	242	6,845	42	73	6,960		Q3
..	228	7,024	50	23	7,097		Q4
						Deliveries (from)	
..	..	27,321	249	320	27,890	2009	
..	326	6,281	89	106	6,476	2008	Q4
..	..	6,046	67	98	6,211	2009	Q1
..	..	6,992	75	92	7,159		Q2
1,712	250	7,530	56	83	7,669		Q3
..	207	6,753	51	47	6,851		Q4
						Stocks *	
..	124	4,935	55	39	5,029	2009	
1,157	229	5,242	84	96	5,422	2008	Q4
..	155	5,324	103	106	5,533	2009	Q1
..	115	5,469	69	96	5,634		Q2
1,704	106	4,639	57	87	4,813		Q3
..	124	4,935	55	39	5,029		Q4
						(c) Total	
						Production	
9,590	6,050	45,005	3,060	2,329	50,394	2009	
2,206	1,243	10,102	838	547	11,487	2008	Q4
2,345	1,470	10,683	803	673	12,094	2009	Q1
2,536	1,581	10,683	774	637	13,463		Q2
2,379	1,593	11,308	831	632	12,771		Q3
2,330	1,406	11,027	652	387	12,066		Q4
						Deliveries (from)	
8,890	5,893	45,097	3,111	2,430	50,638	2009	
2,057	1,603	10,797	820	642	12,259	2008	Q4
2,084	1,467	10,288	769	592	11,649	2009	Q1
2,302	1,504	11,654	856	681	13,191		Q2
2,424	1,594	12,465	809	650	13,924		Q3
2,080	1,328	10,690	677	507	11,874		Q4
						Stocks *	
2,139	1,066	7,422	585	313	8,320	2009	
1,436	903	7,835	593	492	8,920	2008	Q4
1,699	903	7,975	627	559	9,161	2009	Q1
1,934	968	8,354	586	515	9,455		Q2
1,889	962	7,096	609	498	8,203		Q3
2,139	1,066	7,422	585	313	8,320		Q4

(1) Lightweight aggregate including aerated concrete blocks where appropriate.

OTHER BUILDING MATERIALS

Table 13 : Other Building Materials

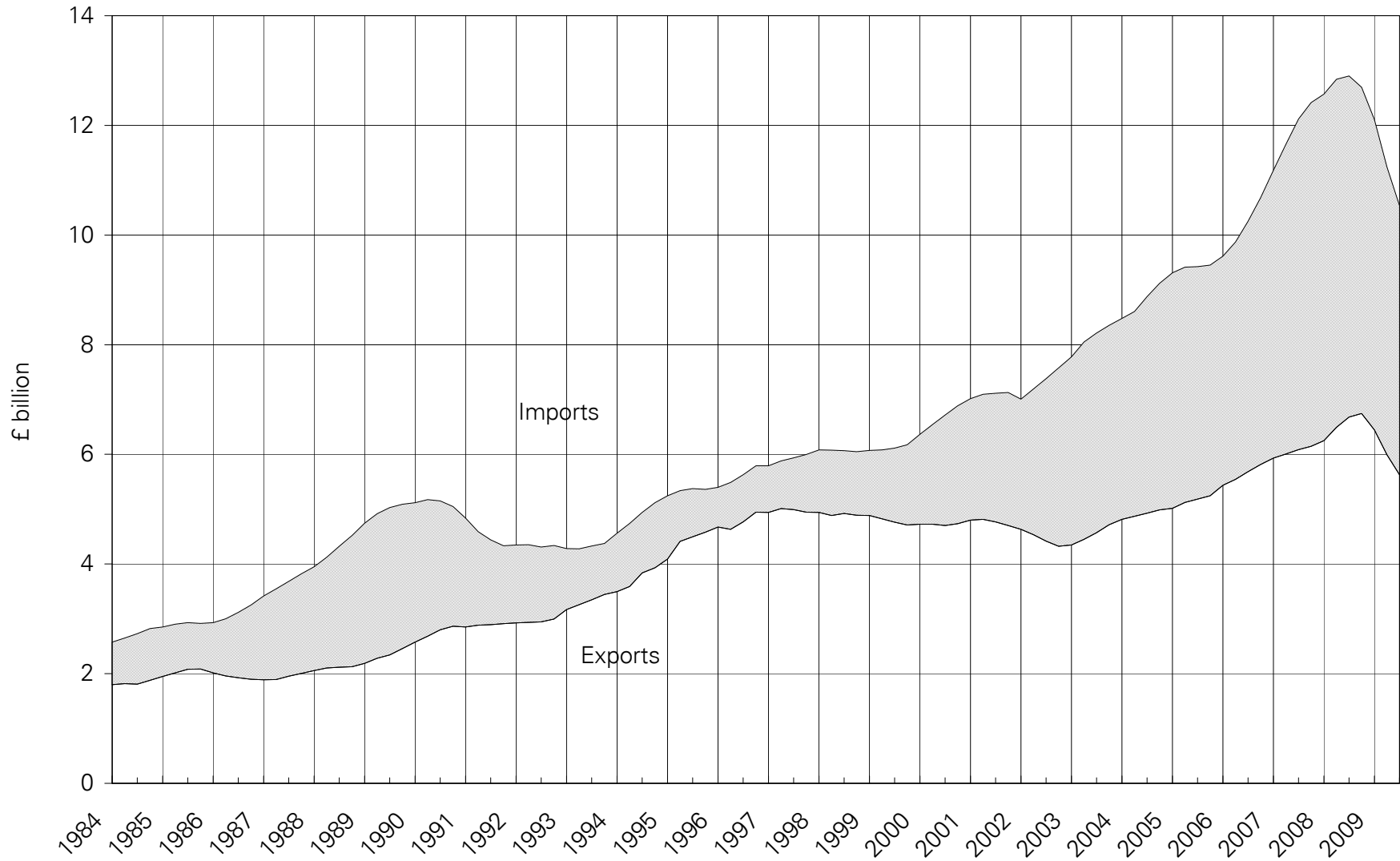
		Great Britain			United Kingdom
		Concrete Roofing Tiles (Th.sq.m. of roof area covered)			Ready-Mixed Concrete (Th.cu.m.)
		Production	Deliveries	Stocks *	Deliveries
1999		25,972	25,365	3,543	23,550
2000		26,765	25,047	4,552	23,043
2001		24,825	24,430	4,947	23,008
2002		25,023	24,390	4,586	22,597
2003		21,437	21,401	2,982	22,289
2004		20,739	19,403	2,850	22,856
2005		25,719	24,489	4,902	22,432
2006		23,730	24,118	4,426	23,029
2007		23,551	23,812	3,646	23,548
2008		20,084	19,926	3,899	20,051
2009		14,079	15,612	2,344	14,069
2000	Q4	5,979	5,903	4,552	5,248
2001	Q1	6,618	5,762	5,407	5,293
	Q2	6,435	5,957	5,885	6,018
	Q3	6,047	6,907	5,025	6,050
	Q4	5,725	5,803	4,947	5,647
2002	Q1	6,757	5,801	5,332	5,404
	Q2	6,097	6,474	4,954	5,934
	Q3	5,918	6,848	3,654	5,929
	Q4	6,251	5,267	4,586	5,330
2003	Q1	5,821	5,798	4,484	5,388
	Q2	6,280	6,364	4,480	5,892
	Q3	3,917	4,455	2,362	5,750
	Q4	5,418	4,785	2,982	5,259
2004	Q1	5,498	4,294	3,787	5,334
	Q2	5,266	4,800	3,728	5,931
	Q3	4,920	5,134	3,048	6,038
	Q4	5,055	5,175	2,850	5,553
2005	Q1	5,787	4,779	3,732	5,137
	Q2	7,502	6,406	5,818	5,994
	Q3	6,135	7,103	4,850	5,920
	Q4	6,295	6,200	4,902	5,381
2006	Q1	6,792	6,252	5,418	5,445
	Q2	6,002	5,709	5,708	5,995
	Q3	5,448	6,371	4,688	6,047
	Q4	5,489	5,787	4,426	5,542
2007	Q1	6,618	5,629	5,368	5,554
	Q2	5,775	5,728	5,360	6,103
	Q3	5,129	6,541	3,929	6,205
	Q4	6,028	5,914	3,646	5,686
2008	Q1	5,708	5,421	3,922	5,193
	Q2	5,815	5,679	4,488	5,773
	Q3	4,657	4,977	3,840	4,902
	Q4	3,903	3,849	3,899	4,183
2009	Q1	3,664	3,281	4,273	3,583
	Q2	3,055	3,936	3,391	3,637
	Q3	3,580	4,447	2,522	3,628
	Q4	3,779	3,949	2,344	3,221

* Refers to stocks at the end of the period.

Imports

Comparison of Imports & Exports

4-quarter moving totals



The data is taken from Table 14

EXTERNAL TRADE

Table 14 : Value of Overseas Trade in Selected Materials and Components for Constructional Use : Imports (cif) & Exports (fob)

United Kingdom

Current Prices (£'000)

		2003	2004	2005	2006	2007	2008
All Building Materials & Components	Imports	8,353,619	9,118,176	9,453,468	10,680,840	12,415,881	12,697,051
	Exports	4,717,767	4,987,277	5,246,751	5,813,304	6,147,720	6,747,420
	Balance	(3,635,852)	(4,130,899)	(4,206,717)	(4,867,536)	(6,268,161)	(5,949,631)
All Raw Materials	Imports	114,586	123,992	149,137	180,137	213,589	228,017
	Exports	63,367	79,654	91,180	98,058	124,957	116,928
	Balance	(51,219)	(44,338)	(57,957)	(82,079)	(88,632)	(111,089)
Sand for construction	Imports	2,421	3,756	4,363	5,075	6,454	6,369
	Exports	3,443	4,566	5,499	5,770	7,770	9,372
Crushed Rock : uncoated	Imports	18,724	21,830	28,580	39,307	38,882	43,442
	Exports	46,046	53,914	60,850	65,986	71,989	77,930
Crushed Rock : coated	Imports	6	3	1,172	2,246	2,927	3,206
	Exports	2,891	1,978	4,787	2,622	3,937	3,862
Building Stone : unprocessed	Imports	58,201	74,956	92,059	95,903	115,063	124,435
	Exports	1,831	1,769	1,597	1,777	3,209	2,159
Slate : unprocessed	Imports	7,082	7,431	7,428	10,894	11,590	9,294
	Exports	686	587	703	309	1,579	813
Gypsum & Anhydrite	Imports	8,596	8,040	9,509	8,649	8,626	8,301
	Exports	428	510	547	512	493	899
Bituminous Shale	Imports	19,556	7,975	6,027	18,063	30,045	32,971
	Exports	8,042	16,329	17,196	21,084	35,980	21,894
All Semi-Manufactures	Imports	1,572,077	1,631,987	1,619,893	1,756,079	2,196,076	1,972,141
	Exports	466,234	517,347	575,828	618,574	644,416	648,819
	Balance	(1,105,843)	(1,114,640)	(1,044,065)	(1,137,505)	(1,551,660)	(1,323,322)
Clinker	Imports	20,840	21,684	26,338	40,922	60,554	35,973
	Exports	2,027	1,325	1,801	2,644	1,900	1,271
Sawn Wood > 6mm thick	Imports	744,256	712,779	691,359	727,916	915,899	610,293
	Exports	26,426	26,178	30,939	38,370	32,010	20,957
Densified Wood	Imports	2,247	2,199	2,604	2,782	2,332	1,767
	Exports	405	473	474	422	319	271
Particle Board	Imports	48,410	54,772	58,318	56,174	55,934	45,498
	Exports	12,305	12,320	11,058	16,357	9,377	8,920
Laminated Wood	Imports	190,846	237,481	232,912	250,616	282,912	296,970
	Exports	13,958	18,564	22,720	24,435	23,172	21,935
Fibreboard	Imports	63,182	64,665	58,050	61,430	72,498	61,615
	Exports	19,960	16,456	10,397	12,533	10,574	8,966
Steel for Fabrication	Imports	229,234	273,422	248,987	278,233	463,477	529,328
	Exports	218,993	251,209	270,580	236,427	257,126	301,366
Aluminium for Fabrication	Imports	203,976	189,245	211,703	272,982	277,251	315,948
	Exports	109,558	122,579	152,508	220,652	234,348	216,595
Profiles of Vinyl Chloride	Imports	52,186	47,944	48,667	48,748	41,560	44,169
	Exports	23,149	24,625	24,011	27,350	33,766	25,782
Slag for Construction	Imports	1,963	2,352	4,790	4,625	8,607	11,579
	Exports	834	1,913	2,788	1,747	1,231	1,017
Tar & Bituminous Mixtures	Imports	12,807	21,277	34,133	9,262	12,284	17,424
	Exports	26,423	30,727	37,636	26,008	27,896	27,680
Lime	Imports	2,130	4,167	2,031	2,390	2,767	1,579
	Exports	12,196	10,977	10,915	11,629	12,698	14,059

Current Prices (£'000)

Q3	Q4	2009 Q1	Q2	Q3		
3,256,463	2,879,462	2,534,022 (R)	2,569,983 (R)	2,553,854	Imports	All Building Materials & Components
1,729,768	1,606,629	1,307,965 (R)	1,349,141 (R)	1,363,123	Exports	
(1,526,695)	(1,272,833)	(1,226,057) (R)	(1,220,842) (R)	(1,190,731)	Balance	
56,549	43,632	32,120 (R)	41,050 (R)	45,471	Imports	All Raw Materials
33,839	29,688	25,284	31,980 (R)	29,183	Exports	
(22,710)	(13,944)	(6,836) (R)	(9,070) (R)	(16,288)	Balance	
1,934	1,161	1,296	1,724 (R)	1,542	Imports	Sand for construction
2,141	2,460	2,178	1,763	1,979	Exports	
12,108	9,152	7,179	7,794	9,168	Imports	Crushed Rock : uncoated
20,599	20,439	17,624	20,593 (R)	11,039	Exports	
852	685	726	366	473	Imports	Crushed Rock : coated
702	1,286	641	1,021	824	Exports	
32,318	22,889	17,537 (R)	26,522 (R)	26,541	Imports	Building Stone : unprocessed
663	474	397	469	701	Exports	
2,332	2,051	1,642	1,061	1,395	Imports	Slate : unprocessed
136	120	702	545	462	Exports	
2,558	1,590	1,753 (R)	2,597 (R)	1,571	Imports	Gypsum & Anhydrite
334	218	154	159 (R)	173	Exports	
4,445	6,106	1,987	986	4,781	Imports	Bituminous Shale
9,264	4,692	3,588	7,430	14,005	Exports	
500,304	414,020	312,265 (R)	349,962 (R)	354,780	Imports	All Semi-Manufactures
162,158	135,666	105,642 (R)	98,585 (R)	106,057	Exports	
(338,146)	(278,354)	(206,623) (R)	(251,377) (R)	(248,723)	Balance	
7,164	4,409	4,800	3,384	5,792	Imports	Clinker
276	136	396	147	94	Exports	
147,026	98,338	105,727 (R)	142,252 (R)	154,144	Imports	Sawn Wood > 6mm thick
4,933	3,616	4,140 (R)	4,333 (R)	4,225	Exports	
420	248	335	301	415	Imports	Densified Wood
90	44	31	58	111	Exports	
10,444	7,875	6,712 (R)	7,531 (R)	6,855	Imports	Particle Board
2,223	1,979	2,082	2,208 (R)	2,096	Exports	
78,763	72,932	50,977 (R)	53,842 (R)	53,095	Imports	Laminated Wood
4,539	4,714	4,829 (R)	3,379 (R)	3,528	Exports	
15,757	12,110	13,664 (R)	14,662 (R)	13,232	Imports	Fibreboard
2,134	2,014	2,823 (R)	2,185 (R)	2,764	Exports	
133,732	133,277	49,850 (R)	46,313 (R)	35,625	Imports	Steel for Fabrication
73,676	59,803	42,266	43,564 (R)	49,604	Exports	
86,553	71,982	65,397 (R)	64,346 (R)	68,921	Imports	Aluminium for Fabrication
56,535	45,261	36,886 (R)	28,765 (R)	26,179	Exports	
11,639	8,102	8,662	12,150 (R)	12,115	Imports	Profiles of Vinyl Chloride
6,342	5,641	4,700	5,717 (R)	6,529	Exports	
4,328	1,908	1,663	308 (R)	247	Imports	Slag for Construction
109	92	200	242	198	Exports	
4,114	2,479	4,198	4,526 (R)	4,001	Imports	Tar & Bituminous Mixtures
7,994	9,033	5,188	4,779 (R)	7,185	Exports	
364	362	281	347	339	Imports	Lime
3,305	3,335	2,100	3,211	3,541	Exports	

EXTERNAL TRADE

Table 14 : Value of Overseas Trade in Selected Materials and Components for Constructional Use : Imports (cif) & Exports (fob)

United Kingdom		Current Prices (£'000)					
		2003	2004	2005	2006	2007	2008
All Products & Components	Imports	6,666,956	7,362,197	7,684,438	8,744,624	10,006,216	10,496,893
	Exports	4,188,166	4,390,277	4,579,743	5,096,672	5,378,347	5,981,673
	Balance	(2,478,790)	(2,971,920)	(3,104,695)	(3,647,952)	(4,627,869)	(4,515,220)
Wood sleepers (rail & tram)	Imports	5,103	5,981	7,296	6,844	7,907	10,736
	Exports	48	42	905	606	905	1,074
Building Stone : processed	Imports	135,000	152,257	173,779	206,066	243,019	252,175
	Exports	24,744	33,589	39,289	36,148	34,465	38,558
Slate Roofing Tiles	Imports	45,667	51,174	53,197	50,717	58,164	65,873
	Exports	8,268	10,211	11,093	5,479	6,941	6,560
Other Slate Products	Imports	4,403	9,759	10,235	10,641	8,963	8,204
	Exports	2,401	2,050	2,570	2,407	2,348	1,644
Portland Cement	Imports	51,676	63,269	56,472	52,408	59,422	65,929
	Exports	12,773	13,527	21,707	28,178	26,525	13,271
Other Cements	Imports	21,930	23,115	22,409	24,857	24,704	31,452
	Exports	20,891	25,576	23,786	32,358	31,335	29,825
Steel Sheet Piling	Imports	17,348	35,965	47,933	55,911	71,746	78,763
	Exports	33,029	31,360	14,808	18,609	20,205	32,009
Ready-Mixed Concrete	Imports	1	41	3	612	685	825
	Exports	3,784	4,930	9,073	10,116	10,378	12,639
Concrete Reinforcing Bars	Imports	108,833	106,989	121,965	150,492	181,794	210,554
	Exports	14,757	27,612	38,095	38,587	107,236	194,136
Mortars	Imports	4,369	4,927	4,739	5,247	6,225	7,022
	Exports	4,405	4,494	5,566	5,998	5,772	6,410
Clay Bricks	Imports	21,733	23,996	27,577	29,102	35,245	25,877
	Exports	6,909	10,000	12,082	13,541	10,591	7,133
Clay Roofing Tiles	Imports	5,474	8,720	9,485	10,285	10,347	10,104
	Exports	695	1,014	1,449	1,680	304	275
Clay Pipes	Imports	873	778	2,163	601	669	312
	Exports	11,752	9,188	8,446	6,262	5,518	5,775
Other Clay Products	Imports	2,187	4,886	5,240	5,886	5,602	6,669
	Exports	3,854	4,794	14,338	11,123	17,501	18,853
Concrete Blocks & Bricks	Imports	4,246	4,297	5,866	4,544	11,476	8,616
	Exports	20,431	21,242	25,598	26,814	27,319	21,102
Concrete Roofing Tiles	Imports	2,106	2,027	2,408	4,845	4,664	7,194
	Exports	8,752	7,880	7,285	7,857	7,013	3,844
Other Concrete Tiles & Paving	Imports	10,648	9,734	11,753	14,702	16,131	18,353
	Exports	35,251	32,144	35,168	33,692	38,281	34,757
Prefabricated Concrete Products	Imports	11,316	15,093	20,288	22,439	26,763	34,840
	Exports	12,117	25,010	29,374	28,936	23,241	19,042
Concrete Pipes	Imports	7,629	16,918	21,365	27,303	32,767	36,740
	Exports	27,068	28,674	25,566	27,010	32,536	31,413

Current Prices (£'000)

Q3	Q4	2009 Q1	Q2	Q3			
2,699,609	2,421,811	2,189,636 (R)	2,178,971 (R)	2,153,604	Imports	All Products & Components	
1,533,772	1,441,274	1,177,039 (R)	1,218,575 (R)	1,227,884	Exports		
(1,165,837)	(980,537)	(1,012,597) (R)	(960,396) (R)	(925,720)	Balance		
2,611	906	1,081 (R)	1,652 (R)	1,694	Imports		Wood sleepers (rail & tram)
162	439	131	330 (R)	143	Exports		
62,318	57,671	46,911 (R)	52,908 (R)	53,924	Imports		Building Stone : processed
10,244	7,528	10,104 (R)	8,139 (R)	11,149	Exports		
19,600	13,397	14,487 (R)	13,161 (R)	13,991	Imports		Slate Roofing Tiles
1,640	1,315	2,983	1,803 (R)	1,770	Exports		
1,683	1,630	1,330 (R)	2,200 (R)	1,892	Imports		Other Slate Products
466	350	190	458	344	Exports		
17,563	12,331	14,317	14,374 (R)	13,801	Imports		Portland Cement
2,184	1,643	1,133	1,184	1,173	Exports		
7,562	11,372	9,809 (R)	13,226 (R)	12,478	Imports		Other Cements
7,223	6,381	5,582	5,546 (R)	6,580	Exports		
18,369	19,855	11,696	12,513 (R)	12,875	Imports		Steel Sheet Piling
8,526	7,528	5,702 (R)	5,501 (R)	5,926	Exports		
149	331	101	129	218	Imports		Ready-Mixed Concrete
3,713	3,282	1,088	1,195	1,284	Exports		
78,857	35,362	26,763 (R)	16,476 (R)	15,763	Imports		Concrete Reinforcing Bars
73,808	49,537	19,061	25,021	14,102	Exports		
1,735	1,588	1,882	1,885 (R)	2,144	Imports	Mortars	
1,509	1,618	1,211	1,645	1,385	Exports		
6,289	4,724	4,744	5,461 (R)	4,505	Imports	Clay Bricks	
2,090	1,115	1,032	1,096	909	Exports		
2,309	2,259	1,538 (R)	1,800 (R)	2,394	Imports	Clay Roofing Tiles	
104	49	103	114	209	Exports		
4	53	73	29	14	Imports	Clay Pipes	
1,409	1,460	1,048	621	1,197	Exports		
1,783	1,309	549	1,202 (R)	2,241	Imports	Other Clay Products	
5,490	1,343	966	714	502	Exports		
2,245	1,564	1,313	1,153 (R)	991	Imports	Concrete Blocks & Bricks	
5,867	3,808	2,917	4,099 (R)	2,986	Exports		
1,857	1,494	1,925	1,913	1,929	Imports	Concrete Roofing Tiles	
1,064	591	644	608 (R)	672	Exports		
3,891	3,077	3,516 (R)	3,917 (R)	4,042	Imports	Other Concrete Tiles & Paving	
9,168	6,338	4,488	6,617	5,147	Exports		
8,397	8,109	5,326 (R)	6,807 (R)	5,260	Imports	Prefabricated Concrete Products	
5,364	3,280	2,126 (R)	2,506 (R)	2,195	Exports		
9,884	8,464	10,052 (R)	9,614 (R)	11,500	Imports	Concrete Pipes	
8,103	6,628	5,998 (R)	7,987 (R)	7,439	Exports		

EXTERNAL TRADE

Table 14 : Value of Overseas Trade in Selected Materials and Components for Constructional Use : Imports (cif) & Exports (fob)

United Kingdom		Current Prices (£'000)					
		2003	2004	2005	2006	2007	2008
Products & Components (continued)							
Structural Units (steel)	Imports	229,855	275,573	308,125	361,685	526,139	564,645
	Exports	384,989	366,258	401,830	445,236	498,331	604,521
Structural Units (aluminium)	Imports	178,048	130,037	147,050	149,757	220,258	251,908
	Exports	63,415	72,732	72,730	81,708	81,777	98,289
Steel Tubes & Hollow Sections	Imports	69,092	89,647	94,193	117,181	142,421	157,616
	Exports	85,884	74,805	93,135	109,871	114,756	132,536
Bituminous Roofing Felt	Imports	16,314	17,279	19,559	21,082	25,626	30,854
	Exports	5,231	5,209	5,438	5,755	5,406	3,508
Other Asphalt products	Imports	7,240	8,476	9,488	8,449	9,965	9,999
	Exports	15,229	13,017	12,815	16,756	16,768	18,030
Mineral Insulating Materials	Imports	64,287	70,064	81,458	84,002	81,850	78,962
	Exports	78,231	99,812	115,427	137,321	139,360	132,696
Glass Fibre	Imports	1,977	1,782	1,241	2,666	1,482	1,185
	Exports	1,267	671	1,271	820	1,188	2,831
Fibre Cement Products	Imports	18,308	20,389	22,168	24,343	31,344	28,054
	Exports	9,040	6,578	7,402	6,618	6,667	7,680
Building Plasters	Imports	6,003	4,475	6,740	5,725	6,171	6,867
	Exports	2,946	5,263	6,324	8,121	7,623	8,078
Plasterboard	Imports	32,538	45,399	37,787	34,275	30,302	16,057
	Exports	13,411	19,103	16,724	24,262	19,797	18,397
Copper Pipes	Imports	117,993	153,381	152,310	212,455	217,861	245,213
	Exports	112,436	109,661	124,772	167,831	153,412	171,581
Lead Pipes & Fittings	Imports	33	113	115	168	93	17
	Exports	58	297	1,768	204	48	625
Zinc Pipes & Fittings	Imports	81	207	179	328	1,154	919
	Exports	2,909	4,231	3,989	5,446	7,166	6,016
Other Zinc Building Products	Imports	7,596	11,056	11,992	14,480	12,447	13,117
	Exports	12,155	15,822	21,052	23,873	20,945	22,026
Plastic Pipes	Imports	69,465	78,305	84,353	100,144	114,727	133,929
	Exports	141,043	152,224	170,733	187,793	205,332	211,719
Other Plastic Building Products	Imports	87,529	105,632	116,565	133,409	148,828	149,234
	Exports	84,704	93,460	99,630	100,498	115,008	117,408
Builders Ironmongery	Imports	355,324	377,439	389,610	452,335	498,372	505,665
	Exports	135,144	134,198	130,262	155,064	157,425	165,477
Nails & Screws	Imports	47,431	52,292	48,017	51,836	59,853	61,080
	Exports	9,401	10,480	14,171	15,229	12,553	12,851
Mastics, Putty	Imports	114,733	119,705	126,302	138,983	148,599	151,898
	Exports	84,926	84,732	82,529	95,347	103,998	119,257
Paints & Varnishes	Imports	286,155	292,933	297,691	315,962	339,581	356,452
	Exports	396,953	398,005	421,283	436,044	442,126	551,563

Current Prices (£'000)

Q3	Q4	2009 Q1	Q2	Q3			Products & Components (continued)
137,367	119,180	110,323 (R)	120,368 (R)	103,435	Imports		Structural Units (steel)
153,872	150,016	116,330 (R)	127,146 (R)	111,313	Exports		
52,596	78,216	83,635 (R)	65,011 (R)	86,638	Imports		Structural Units (aluminium)
20,979	28,746	13,290	15,536 (R)	25,925	Exports		
41,349	34,766	30,463 (R)	26,203 (R)	28,334	Imports		Steel Tubes & Hollow Sections
35,731	30,511	22,272	21,483 (R)	18,936	Exports		
8,347	7,462	7,721 (R)	8,598 (R)	10,554	Imports		Bituminous Roofing Felt
1,087	766	718	1,090 (R)	808	Exports		
3,003	2,357	2,416 (R)	2,986 (R)	2,587	Imports		Other Asphalt products
4,759	5,394	4,212	4,233	5,146	Exports		
20,234	16,649	17,535 (R)	17,474 (R)	18,038	Imports		Mineral Insulating Materials
35,058	29,967	25,828 (R)	24,879 (R)	28,469	Exports		
338	391	109	58	241	Imports		Glass Fibre
401	896	177	580	449	Exports		
7,017	5,756	6,934 (R)	7,350 (R)	8,014	Imports		Fibre Cement Products
2,383	1,631	955	1,572 (R)	1,028	Exports		
1,937	1,534	2,401	2,112	1,941	Imports		Building Plasters
2,252	1,625	1,985 (R)	1,407 (R)	2,421	Exports		
3,382	3,384	4,039 (R)	3,464 (R)	3,104	Imports		Plasterboard
5,165	3,582	4,879 (R)	4,274 (R)	4,263	Exports		
62,934	48,180	40,107 (R)	41,056 (R)	46,501	Imports		Copper Pipes
43,971	38,037	26,600	26,617 (R)	30,548	Exports		
12	4	134 (R)	31 (R)	164	Imports		Lead Pipes & Fittings
585	16	37	99	61	Exports		
235	160	111	144	97	Imports		Zinc Pipes & Fittings
1,516	914	817	1,023	850	Exports		
3,011	3,082	3,297 (R)	2,443 (R)	1,995	Imports		Other Zinc Building Products
5,143	4,400	5,337	5,962 (R)	5,304	Exports		
32,021	27,545	28,222 (R)	27,635 (R)	30,425	Imports		Plastic Pipes
49,311	48,605	37,442 (R)	65,159 (R)	58,452	Exports		
37,527	31,763	34,479 (R)	34,821 (R)	35,835	Imports		Other Plastic Building Products
30,074	25,577	22,449 (R)	23,670 (R)	25,631	Exports		
129,568	111,370	70,384 (R)	66,529 (R)	68,196	Imports		Builders Ironmongery
41,322	39,837	23,874 (R)	22,162 (R)	23,417	Exports		
13,579	14,362	12,354 (R)	11,068 (R)	12,223	Imports		Nails & Screws
3,725	2,520	1,901	2,088 (R)	2,128	Exports		
38,736	33,414	31,116 (R)	33,393 (R)	34,868	Imports		Mastics, Putty
32,866	26,382	25,790 (R)	26,505 (R)	27,236	Exports		
97,422	78,811	78,809 (R)	91,982 (R)	89,475	Imports		Paints & Varnishes
152,974	128,452	116,866 (R)	133,330 (R)	128,548	Exports		

EXTERNAL TRADE

Table 14 : Value of Overseas Trade in Selected Materials and Components for Constructional Use : Imports (cif) & Exports (fob)

United Kingdom		Current Prices (£'000)					
		2003	2004	2005	2006	2007	2008
Products & Components (continued)							
Unglazed Ceramic Tiles	Imports	33,515	34,386	48,736	54,270	64,691	71,099
	Exports	2,808	1,791	2,776	2,476	4,419	3,607
Glazed Ceramic Tiles	Imports	299,118	298,832	285,488	285,081	290,867	279,657
	Exports	13,441	16,168	17,216	21,444	20,555	17,707
Ceramic Sanitaryware	Imports	123,692	154,229	157,864	173,687	181,603	174,194
	Exports	36,213	44,780	48,004	54,232	58,228	53,471
Plastic Sanitaryware	Imports	69,624	91,025	98,663	105,586	126,471	120,004
	Exports	62,634	58,709	68,603	78,718	78,812	83,908
Metal Sanitaryware	Imports	105,958	108,114	110,304	123,202	139,821	143,118
	Exports	33,753	38,497	34,553	32,213	33,511	33,167
Flat Glass	Imports	68,138	58,092	53,410	55,900	71,800	61,062
	Exports	41,547	44,772	51,502	67,141	83,174	107,783
Other Glass Products	Imports	63,831	69,646	67,274	78,695	76,235	98,993
	Exports	29,438	30,008	25,895	31,631	37,712	40,297
Wood Veneers	Imports	37,263	34,826	35,328	40,586	38,516	39,407
	Exports	9,127	8,076	9,664	10,607	10,243	10,034
Wood Mouldings	Imports	58,579	67,497	69,452	79,514	73,907	64,579
	Exports	16,131	20,097	18,922	20,362	18,289	11,169
Wood Block Flooring	Imports	104,888	119,103	117,317	132,977	125,112	125,242
	Exports	10,487	9,312	8,086	8,448	5,464	6,136
Other Builder's Woodwork	Imports	64,807	70,930	78,356	93,870	109,022	101,242
	Exports	10,711	23,091	13,298	21,562	19,079	15,908
Windows (wood)	Imports	54,847	66,150	66,201	71,679	84,256	121,171
	Exports	23,010	21,961	5,693	9,466	12,879	10,219
Doors (wood)	Imports	167,738	169,146	164,036	191,637	205,159	209,133
	Exports	25,276	27,176	29,900	38,546	37,008	26,930
Doors & Windows (steel)	Imports	51,052	53,807	57,661	54,493	40,294	39,652
	Exports	21,455	18,376	20,146	21,231	25,825	26,300
Doors & Windows (aluminium)	Imports	69,492	57,010	61,542	68,235	65,654	63,706
	Exports	23,157	23,217	27,785	35,883	32,688	25,474
Doors & Windows (plastic)	Imports	27,110	25,981	27,227	41,045	39,460	39,378
	Exports	47,859	51,774	63,205	68,641	63,218	56,119
Cork Tiles	Imports	2,601	2,658	2,043	2,540	2,877	2,257
	Exports	1,199	1,885	1,662	2,878	1,611	1,641
Linoleum Floor Coverings	Imports	162,338	179,118	179,151	213,518	242,787	256,585
	Exports	180,172	172,688	178,385	188,215	195,735	224,522
Wallpaper	Imports	47,542	43,859	39,129	40,998	58,963	58,637
	Exports	71,002	56,789	55,456	54,868	67,165	73,505
Textile Wall Coverings	Imports	1,408	2,140	1,313	1,187	1,573	2,833
	Exports	1,159	678	484	373	598	499

Current Prices (£'000)

Q3	Q4	2009 Q1	Q2	Q3	Products & Components (continued)		
18,255 947	16,301 774	14,970 (R) 661 (R)	14,346 (R) 659 (R)	15,452 515	Imports Exports	Unglazed Ceramic Tiles	
63,924 4,331	59,547 4,192	61,250 (R) 3,744 (R)	65,127 (R) 4,335 (R)	60,925 3,543	Imports Exports	Glazed Ceramic Tiles	
41,575 13,923	36,810 12,386	35,179 (R) 9,185	39,399 (R) 9,070 (R)	37,196 9,903	Imports Exports	Ceramic Sanitaryware	
30,602 19,246	27,859 20,513	27,735 (R) 20,381 (R)	29,662 (R) 20,944 (R)	26,481 18,904	Imports Exports	Plastic Sanitaryware	
37,841 7,514	30,348 8,008	28,096 (R) 7,424 (R)	28,227 (R) 7,119 (R)	27,314 8,738	Imports Exports	Metal Sanitaryware	
15,718 26,840	15,815 25,281	13,546 16,819	12,588 (R) 13,238	13,230 13,611	Imports Exports	Flat Glass	
25,909 9,847	27,663 10,657	21,686 (R) 7,154 (R)	20,686 (R) 8,017 (R)	20,263 8,825	Imports Exports	Other Glass Products	
9,546 2,894	7,990 2,267	7,165 (R) 1,000 (R)	6,248 (R) 1,849	6,531 1,256	Imports Exports	Wood Veneers	
15,674 2,646	11,426 1,873	14,060 (R) 1,898	17,916 (R) 2,433 (R)	11,338 2,546	Imports Exports	Wood Mouldings	
30,614 1,560	25,144 1,473	23,369 (R) 1,772 (R)	30,859 (R) 1,388 (R)	26,684 1,264	Imports Exports	Wood Block Flooring	
26,969 3,935	22,439 3,212	18,387 (R) 2,684 (R)	20,268 (R) 3,928 (R)	18,929 3,999	Imports Exports	Other Builder's Woodwork	
31,448 2,254	27,822 2,087	27,351 (R) 2,961	26,240 (R) 2,833	28,244 3,082	Imports Exports	Windows (wood)	
50,483 6,270	48,941 5,660	48,774 (R) 4,739 (R)	48,586 (R) 4,991 (R)	41,938 5,075	Imports Exports	Doors (wood)	
11,152 6,425	10,011 5,377	9,655 (R) 5,327	10,181 (R) 5,111 (R)	9,567 5,641	Imports Exports	Doors & Windows (steel)	
18,934 6,206	14,416 4,796	15,826 (R) 4,843	16,411 (R) 4,311 (R)	15,105 4,643	Imports Exports	Doors & Windows (aluminium)	
9,243 14,284	8,399 14,456	9,861 (R) 9,279	10,491 (R) 9,138 (R)	11,263 12,047	Imports Exports	Doors & Windows (plastic)	
608 579	521 354	409 361	396 434	500 445	Imports Exports	Cork Tiles	
63,567 57,713	62,520 54,492	60,354 (R) 51,685 (R)	63,720 (R) 53,763 (R)	58,884 53,546	Imports Exports	Linoleum Floor Coverings	
12,411 18,465	14,766 18,245	13,914 (R) 15,772 (R)	13,127 (R) 16,889 (R)	11,922 16,098	Imports Exports	Wallpaper	
641 89	715 82	528 (R) 55	628 (R) 150	545 44	Imports Exports	Textile Wall Coverings	

EXTERNAL TRADE

Table 14 : Value of Overseas Trade in Selected Materials and Components for Constructional Use : Imports (cif) & Exports (fob)

United Kingdom		Current Prices (£'000)					
		2003	2004	2005	2006	2007	2008
Products & Components (continued)							
Fitted Kitchens (assembled)	Imports	66,141	72,546	88,219	98,937	144,018	171,689
	Exports	22,753	28,543	38,899	34,261	35,322	24,164
Prefabricated Buildings (wood)	Imports	17,755	17,118	18,618	21,986	49,086	40,340
	Exports	28,363	10,276	14,075	22,603	27,807	15,170
Prefabricated Buildings (steel)	Imports	33,516	13,633	25,458	30,281	30,084	50,545
	Exports	33,369	16,629	12,814	42,880	27,464	46,140
Prefabricated Buildings (other)	Imports	30,775	21,723	52,602	67,587	73,414	74,164
	Exports	36,892	67,465	90,502	45,996	35,795	72,310
Mobile Homes	Imports	..	8,266	8,300	7,196	7,113	6,574
	Exports	..	7,752	12,000	8,573	11,291	7,249
Taps & Valves	Imports	193,386	218,022	209,659	265,657	277,803	315,427
	Exports	37,812	42,383	51,134	62,344	72,708	60,597
Pumps (circulating)	Imports	13,191	16,078	20,706	25,544	24,273	21,754
	Exports	19,429	22,176	24,986	28,408	27,131	27,964
Central Heating Boilers	Imports	371,004	386,508	433,200	473,692	493,840	547,727
	Exports	62,531	66,455	72,126	76,578	70,581	80,756
Radiators	Imports	156,028	185,745	173,673	193,948	197,513	184,219
	Exports	18,320	24,109	30,597	37,707	46,938	57,885
Water Heaters	Imports	58,673	63,348	64,514	75,238	88,897	105,755
	Exports	56,723	60,170	70,226	67,902	64,471	84,809
Space Heaters	Imports	121,118	135,387	139,190	120,030	107,581	110,404
	Exports	48,184	48,192	47,605	39,930	37,312	35,117
Fan Systems	Imports	122,017	132,616	134,485	152,829	198,750	161,772
	Exports	78,836	86,463	94,318	132,081	94,651	114,007
Air Conditioning Equipment	Imports	330,246	389,070	360,514	379,150	514,454	644,354
	Exports	191,466	255,124	218,235	201,257	231,145	268,134
Air Purifying Equipment	Imports	28,647	30,072	37,950	31,440	29,827	41,389
	Exports	99,171	101,710	108,350	114,378	120,707	138,002
Hand Driers	Imports	2,916	3,307	3,887	5,009	4,057	7,635
	Exports	1,238	1,905	1,177	1,036	1,648	1,017
Meters	Imports	18,767	17,875	20,971	25,666	24,501	24,156
	Exports	22,270	23,191	22,700	25,024	26,215	47,988
Plugs & Sockets	Imports	155,233	170,877	183,550	232,658	231,664	269,480
	Exports	104,404	119,250	106,743	169,345	148,672	153,173
Electrical Wires	Imports	640,997	770,132	789,156	1,028,495	1,303,906	1,236,486
	Exports	420,550	419,339	392,062	458,568	521,508	554,723
Electrical Insulators	Imports	26,827	33,557	32,793	37,729	30,478	34,957
	Exports	70,687	54,632	38,222	28,858	33,830	32,549
Lamps & Fittings	Imports	321,327	354,391	354,174	392,782	449,230	462,929
	Exports	155,404	168,398	179,800	195,049	221,180	236,971
Fire & Security Alarms	Imports	97,101	131,901	140,511	153,055	144,891	139,974
	Exports	103,585	118,660	130,795	150,929	154,519	182,447
Lifts & Escalators	Imports	77,203	89,366	112,695	104,250	118,401	129,307
	Exports	24,301	17,717	11,664	24,833	43,143	28,698

Current Prices (£'000)

Q3	Q4	2009 Q1	Q2	Q3	Products & Components (continued)	
43,642	35,205	34,682 (R)	29,804 (R)	26,212	Imports	Fitted Kitchens (assembled)
6,062	4,902	4,330 (R)	3,732 (R)	2,917	Exports	
8,874	7,992	9,943 (R)	7,492 (R)	11,272	Imports	Prefabricated Buildings (wood)
5,386	3,089	3,345 (R)	3,149 (R)	3,082	Exports	
9,228	14,208	17,599 (R)	15,406 (R)	8,068	Imports	Prefabricated Buildings (steel)
12,061	8,223	8,015	11,551 (R)	24,730	Exports	
17,485	12,685	14,598	15,295 (R)	9,669	Imports	Prefabricated Buildings (other)
14,522	27,538	6,432	5,987 (R)	8,436	Exports	
1,250	921	1,143	1,829	1,222	Imports	Mobile Homes
2,736	1,654	1,971	1,743	2,325	Exports	
82,154	69,520	60,056 (R)	64,484 (R)	65,658	Imports	Taps & Valves
16,367	13,533	15,523 (R)	13,770 (R)	16,065	Exports	
5,256	4,850	4,871	4,396 (R)	4,646	Imports	Pumps (circulating)
7,760	8,353	6,246	4,009	5,675	Exports	
132,302	151,860	136,322 (R)	133,932 (R)	139,799	Imports	Central Heating Boilers
18,578	18,566	35,229	16,060 (R)	16,817	Exports	
42,700	45,611	48,054 (R)	41,173 (R)	32,545	Imports	Radiators
13,438	10,890	10,917	6,963 (R)	7,354	Exports	
28,227	28,111	30,591 (R)	30,759 (R)	24,275	Imports	Water Heaters
23,962	21,933	17,913	13,423 (R)	15,806	Exports	
30,613	37,582	23,743	18,077 (R)	32,385	Imports	Space Heaters
8,928	10,351	7,660 (R)	6,589 (R)	7,847	Exports	
38,808	35,233	29,825 (R)	29,278 (R)	32,494	Imports	Fan Systems
29,066	32,070	24,467 (R)	26,947 (R)	29,086	Exports	
192,310	153,432	122,555 (R)	120,189 (R)	99,676	Imports	Air Conditioning Equipment
64,940	65,998	56,491 (R)	52,761 (R)	47,359	Exports	
11,181	11,761	12,524 (R)	14,456 (R)	9,982	Imports	Air Purifying Equipment
30,938	32,068	24,940 (R)	24,498 (R)	29,414	Exports	
2,092	3,119	1,628	2,261 (R)	1,895	Imports	Hand Driers
175	321	348	159	403	Exports	
6,743	7,145	5,619	5,366 (R)	5,873	Imports	Meters
11,570	18,142	10,214	9,202 (R)	9,288	Exports	
68,261	64,998	62,749 (R)	62,697 (R)	66,613	Imports	Plugs & Sockets
38,194	35,954	33,812 (R)	32,695 (R)	32,233	Exports	
317,489	279,592	213,420 (R)	213,679 (R)	217,060	Imports	Electrical Wires
131,444	128,434	99,856 (R)	104,893 (R)	103,907	Exports	
8,374	9,357	8,153 (R)	7,847 (R)	6,624	Imports	Electrical Insulators
7,412	8,205	6,927	7,336 (R)	5,797	Exports	
123,268	117,236	108,798 (R)	101,169 (R)	103,349	Imports	Lamps & Fittings
62,066	59,741	52,428 (R)	55,818 (R)	55,089	Exports	
37,679	33,702	35,745	35,174 (R)	32,623	Imports	Fire & Security Alarms
43,385	56,055	58,777 (R)	58,031 (R)	59,445	Exports	
38,840	24,354	32,900 (R)	25,965 (R)	35,021	Imports	Lifts & Escalators
7,503	6,965	5,185	4,667 (R)	5,036	Exports	

© Crown copyright 2010

Published under licence from the Controller of Her Majesty's Stationery Office.

Applications for reproductions should be made in writing to :-

The Copyright Unit, Her Majesty's Stationery Office, St. Clements House,
2-16 Colegate, Norwich NR3 1BQ

April 2010

URN 10 / 313c

ISSN 0264-6188